



# Alb-CreERT2

<b>Nomenclature</b>	B6.129S- <i>Alb</i> <sup>tm1.1(CreERT2)Smoc</sup>
<b>Cat. NO.</b>	NM-KI-00002
<b>Strain State</b>	Repository Live

## Gene Summary

<b>Gene Symbol</b> ALB	<b>Synonyms</b>	Alb1; Alb-1; BCL002
	<b>NCBI ID</b>	<a href="#">11657</a>
	<b>MGI ID</b>	<a href="#">87991</a>
	<b>Ensembl ID</b>	<a href="#">ENSMUSG00000029368</a>
	<b>Human Ortholog</b>	ALB

## Model Description

Exons 1-7 were replaced by CreERT2 and a loxp neo cassette. The KI mice have a tamoxifen-inducible cre-mediated recombination system. This strain has removed the Neo screening gene.

**Research Application:** cre-mediated recombination system

\*Literature published using this strain should indicate: Alb-CreERT2 mice (Cat. NO. NM-KI-00002) were purchased from Shanghai Model Organisms Center, Inc..

## Validation Data

Alb-CreERT2;Rosa26-LacZ

Alb-CreERT2;Rosa26-LacZ  
+Tamoxifen

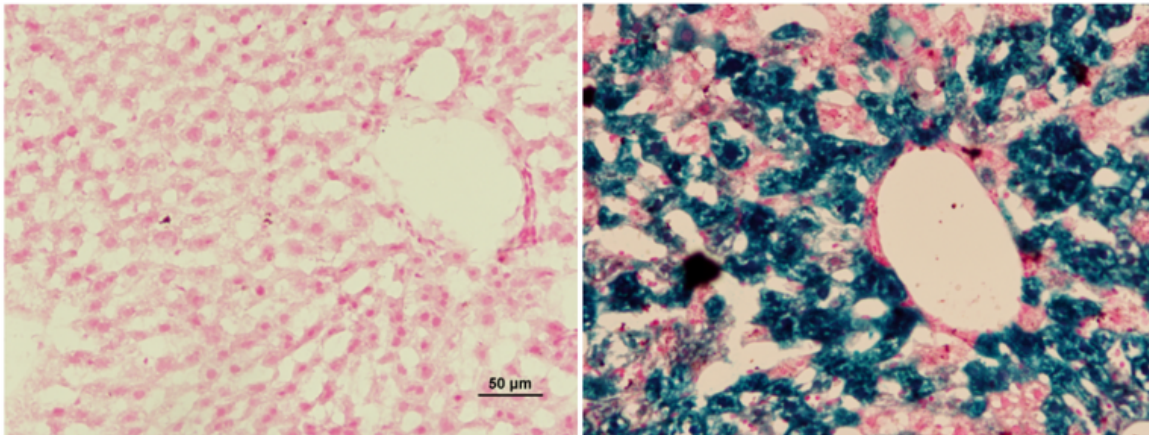


Fig1 X-gal staining of liver slides of Alb-CreERT2 and LacZ positive mouse before and after tamoxifen injection.

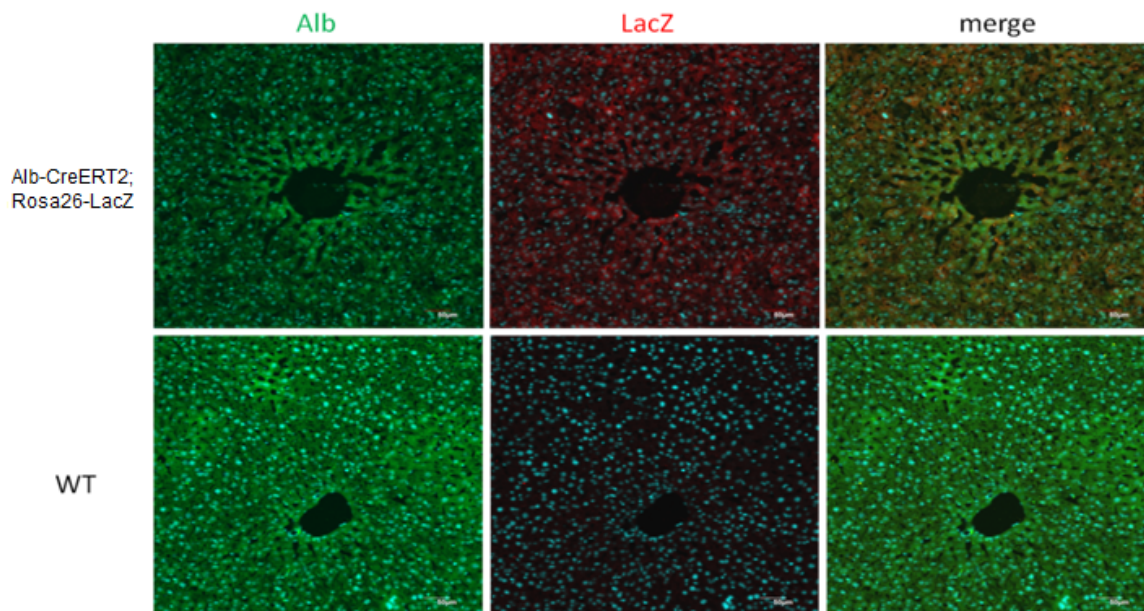


Fig2 Immunofluorescence analysis of liver using anti-Alb(Green) and anti-LacZ(Red) antibodies showed that Cre is expressed in most hepatocytes.

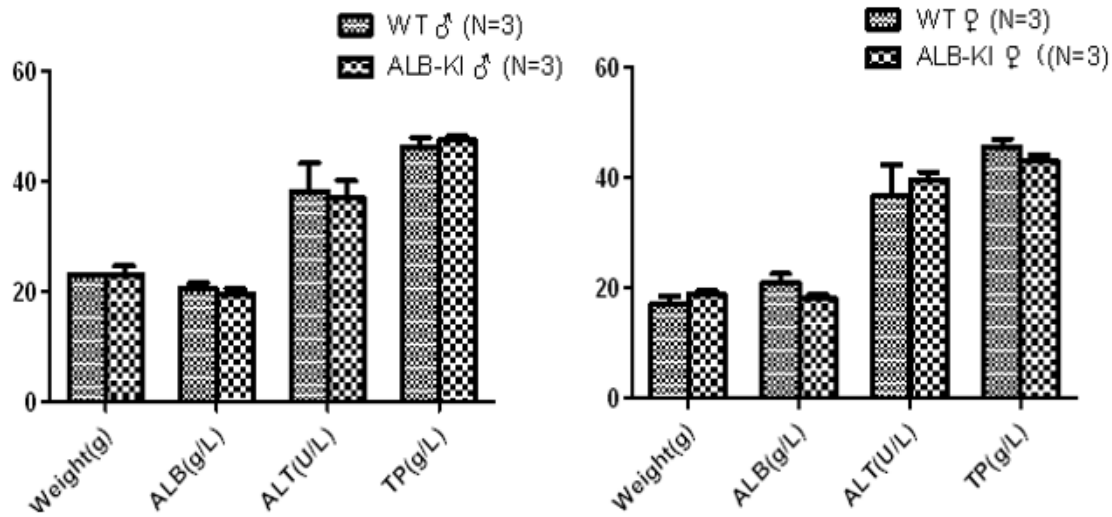


Fig3 Blood biochemical assay of Alb-CreERT2 male and female mice. Alb-CreERT2 mice do not display any liver functional abnormalities.

## Publications

[Liver Soluble Epoxide Hydrolase Regulates Behavioral and Cellular Effects of Chronic Stress](#)

References: Cell Reports