



# Cd45.1

<b>Nomenclature</b>	C57BL/6Smoc- <i>Ptprc</i> <sup>em1(K302E)Smoc</sup>
<b>Cat. NO.</b>	NM-KI-210226
<b>Strain State</b>	Repository Live

## Gene Summary

<b>Gene Symbol</b> <b>Ptprc</b>	<b>Synonyms</b>	loc; B220; Cd45; L-CA; Ly-5; T200; CD45R; Lyt-4
	<b>NCBI ID</b>	<a href="#">19264</a>
	<b>MGI ID</b>	<a href="#">97810</a>
	<b>Ensembl ID</b>	<a href="#">ENSMUSG00000026395</a>
	<b>Human Ortholog</b>	PTPRC

## Model Description

将小鼠Ptprc基因302位由K替换为E，建立该Ptprc基因点突变小鼠模型。

\*Literature published using this strain should indicate: Cd45.1 mice (Cat. NO. NM-KI-210226) were purchased from Shanghai Model Organisms Center, Inc..

## Validation Data

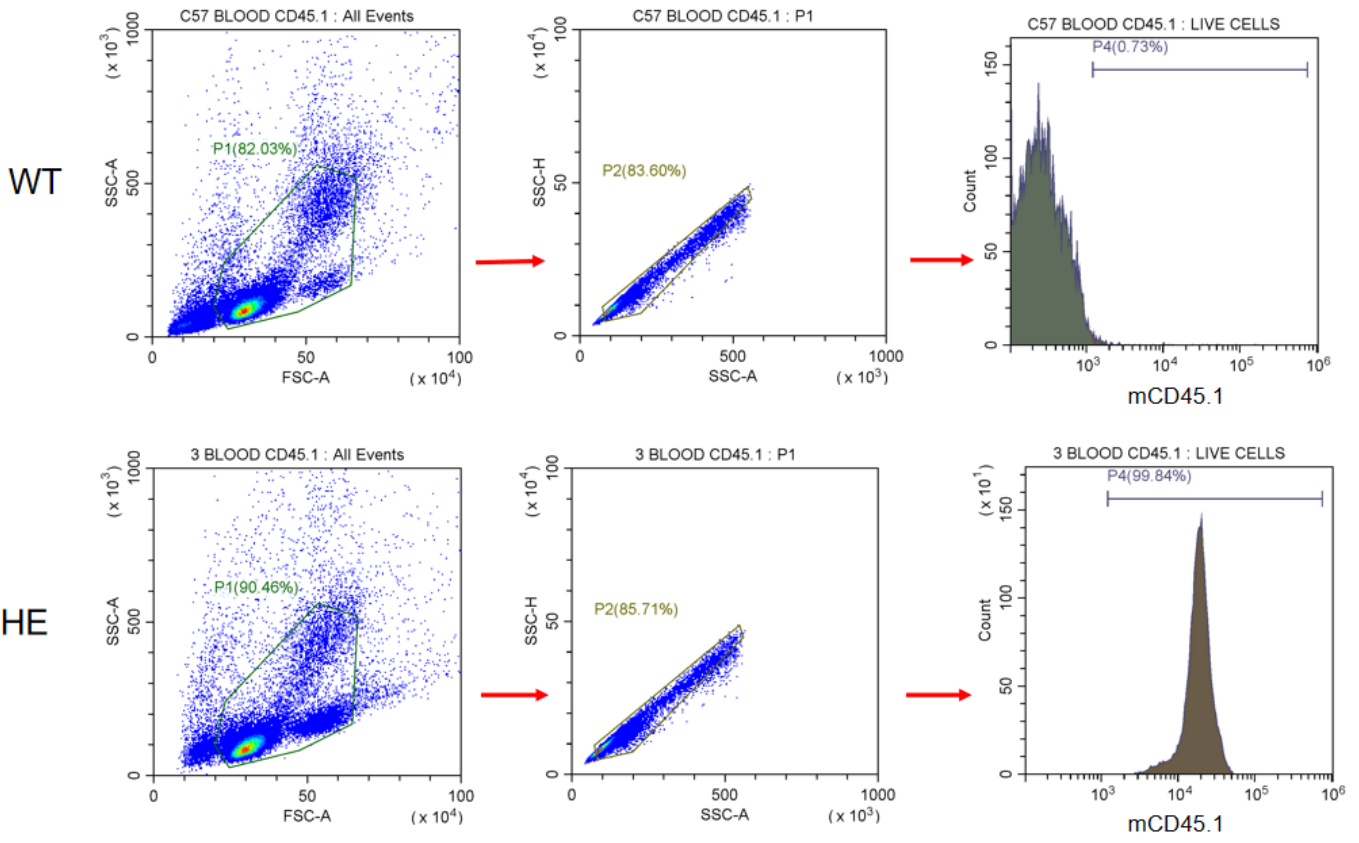
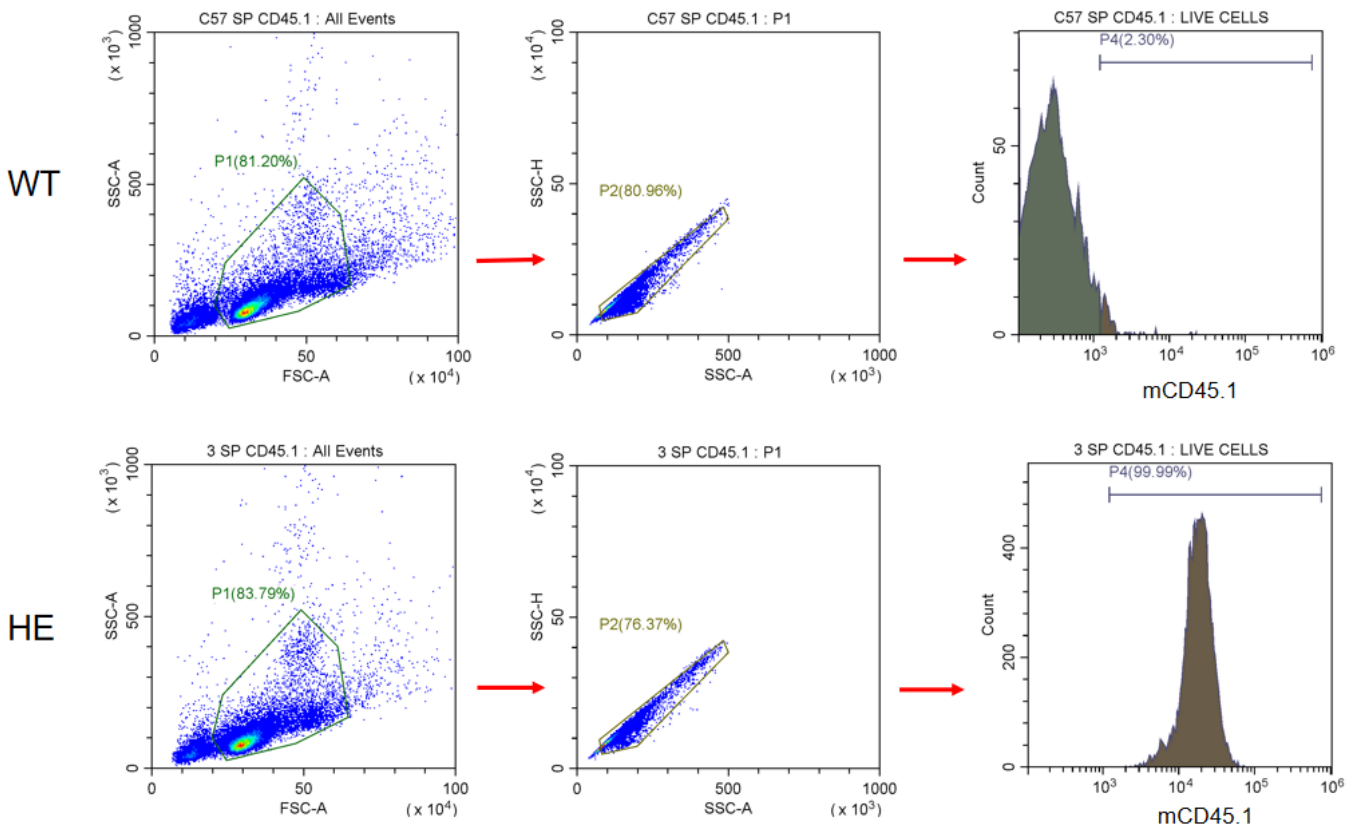


图1. 流式检测Cd45.1杂合子小鼠外周血中CD45.1的表达。结果显示：Cd45.1杂合子小鼠外周血中可以检测到CD45.1的显著表达，符合预期。





---

图2. 流式检测Cd45.1杂合子小鼠脾脏中CD45.1的表达。结果显示：Cd45.1杂合子小鼠脾脏中可以检测到CD45.1的显著表达，符合预期。

---

## Publications