

# Gfap-IRES-Venus-Luc

<b>Nomenclature</b>	C57BL/6Smoc- <i>Gfap</i> <sup>em1(IRES-Venus-Luciferase)Smoc</sup>
<b>Cat. NO.</b>	NM-KI-190022
<b>Strain State</b>	Sperm cryopreservation

## Gene Summary

<b>Gene Symbol</b> <b>Gfap</b>	<b>Synonyms</b>	AI836096
	<b>NCBI ID</b>	<a href="#">14580</a>
	<b>MGI ID</b>	<a href="#">95697</a>
	<b>Ensembl ID</b>	<a href="#">ENSMUSG00000020932</a>
	<b>Human Ortholog</b>	GFAP

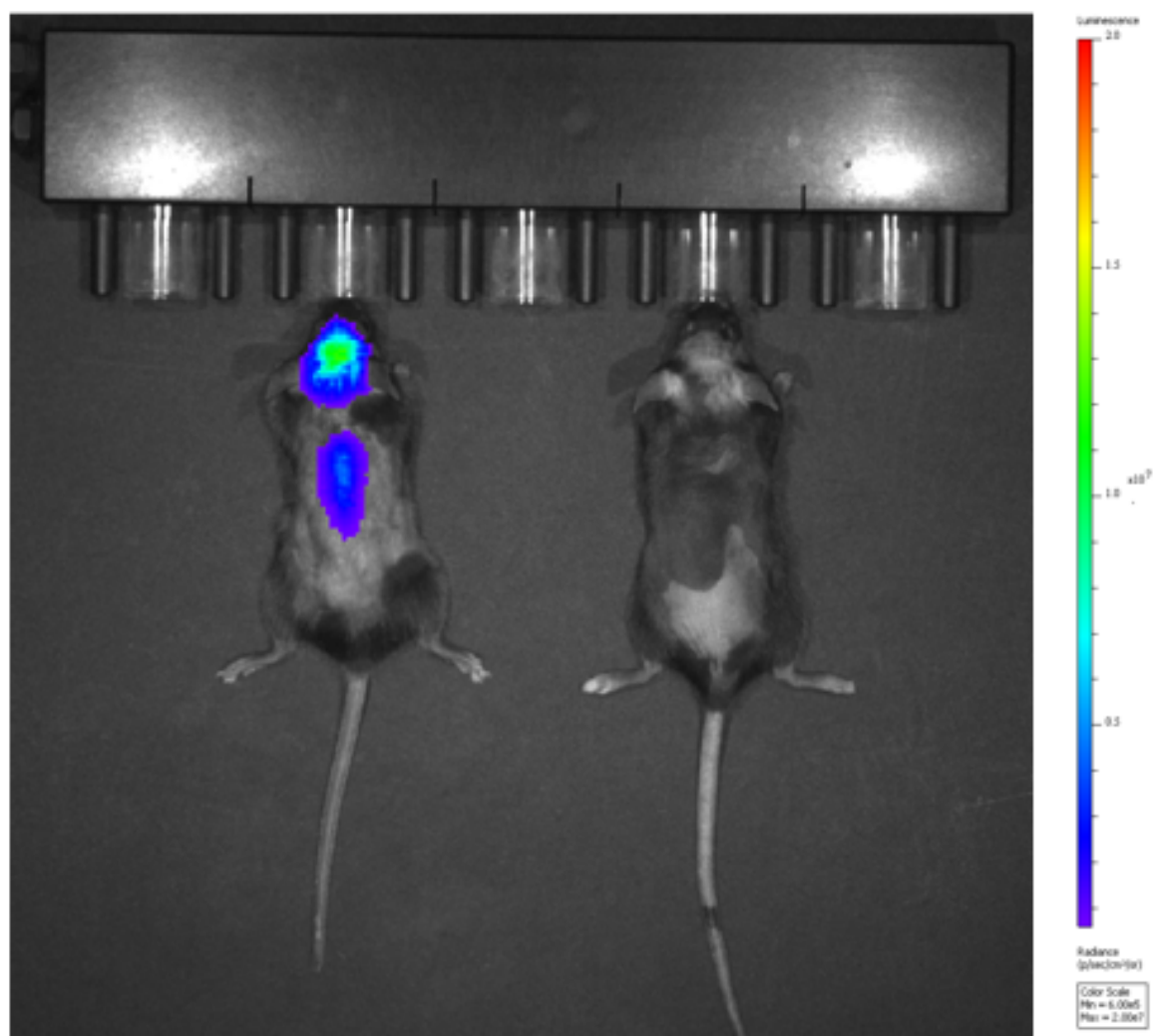
## Model Description

An IRES-Venus-Luciferase co-expression cassette is inserted before 3'UTR region of Gfap gene .

**Research Application:** nervous system

\*Literature published using this strain should indicate: Gfap-IRES-Venus-Luc mice (Cat. NO. NM-KI-190022) were purchased from Shanghai Model Organisms Center, Inc..

## Validation Data



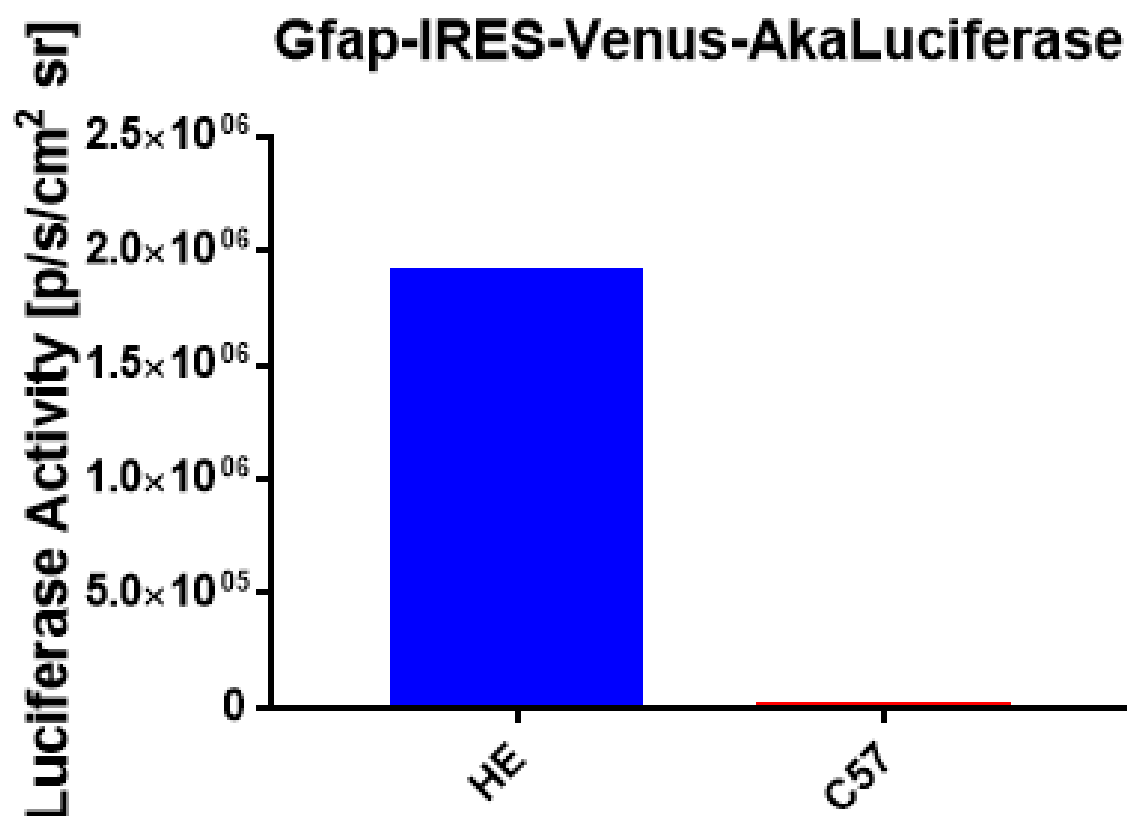


Fig1. In the absence of any stimulation, the in vivo imaging system detected that Gfap-KI mice showed significant fluorescence.

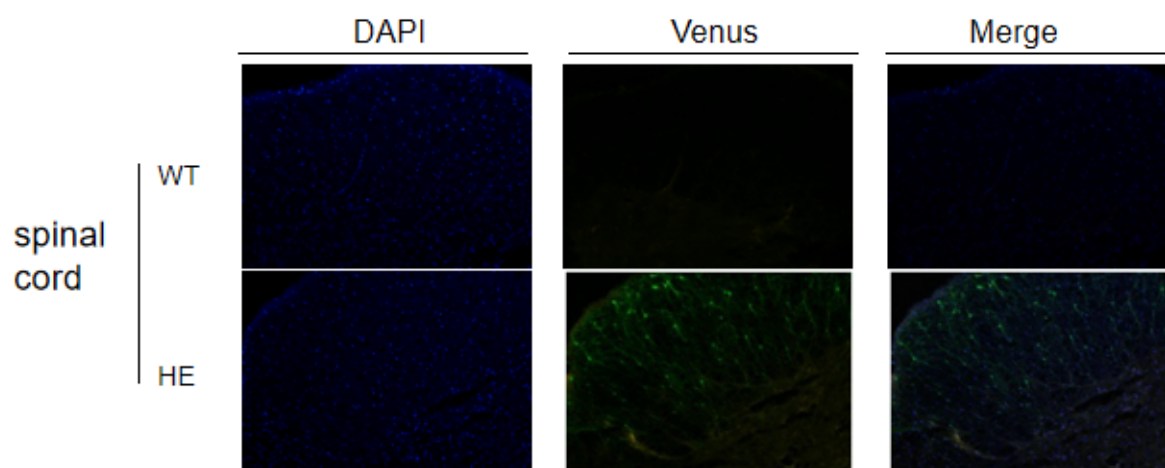


Fig2. Validation of Venus expression by fluorescence assay. The spinal cord of Gfap-KI mice were detected by fluorescence microscopy.