

HCC1428

Strain Information

Cat. NO.	NM-R13
Cell Line	HCC1428
Strain State	Validation of tumorigenic capacity completed
Model	人乳腺癌癌细胞
Description	*Literature published using this strain should indicate: HCC1428 cell line (Cat. NO. NM-R13) was purchased from Shanghai Model Organisms Center, Inc..

Validation Data

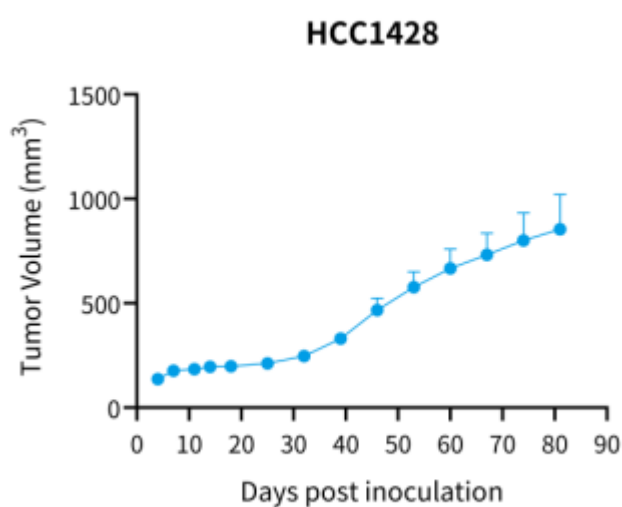


Figure 1. Tumor growth curve of HCC1428 xenograft model (n=6)

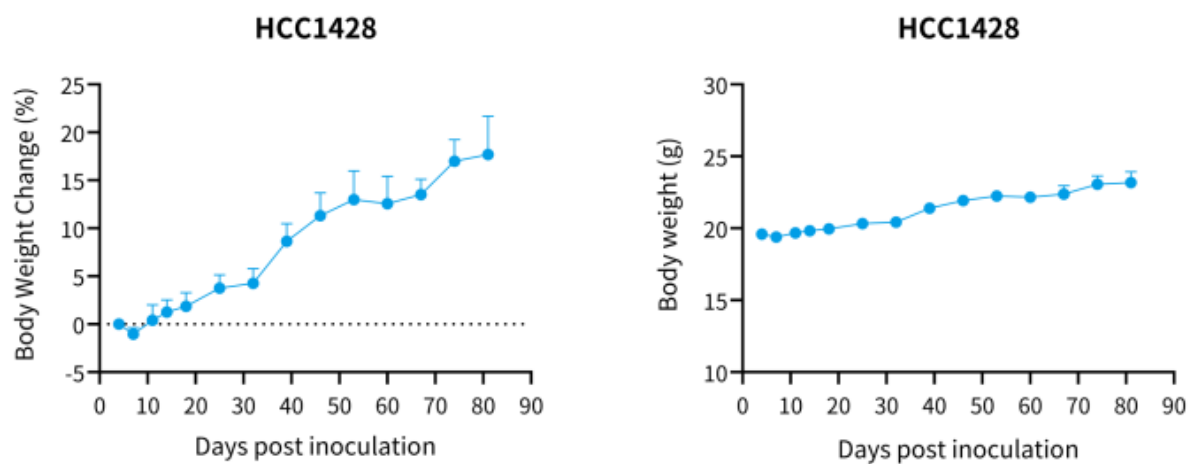


Figure 2. Body weight change of HCC1428 xenograft model (n=6)

野生型细胞株不进行出售服务，仅作为荷瘤鼠和体内药效进行服务。