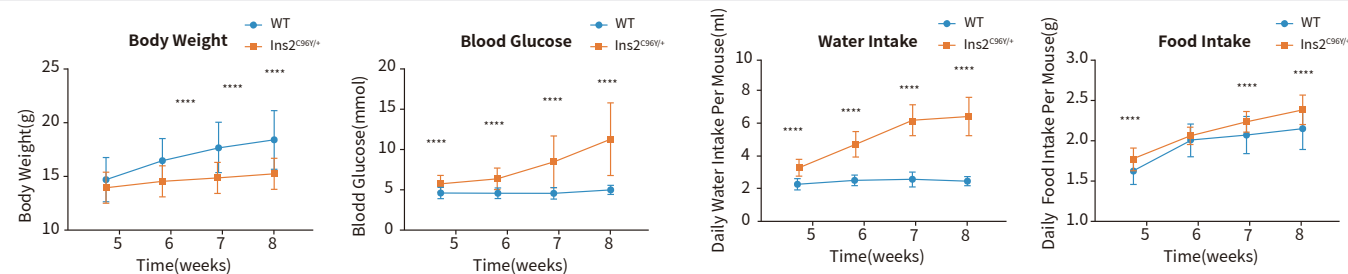


SMOC Rodent Models for Studies of Diabetes

The incidence of diabetes around the world has accumulated dramatically over the decades, and the trend will not cease for the predictable future. SMOC has been striving to develop rodent models for studies of different types of diabetes, such as type 1 diabetes (T1DM), type 2 diabetes (T2DM), gestational diabetes mellitus (GDM), and maturity-onset diabetes of the young (MODY). Based on our versatile platforms, not only genetically engineered rodent models of diabetes but also diet-induced diabetes models are available at SMOC! We ensure that our rodent models will be the cornerstone of your studies of diabetes!

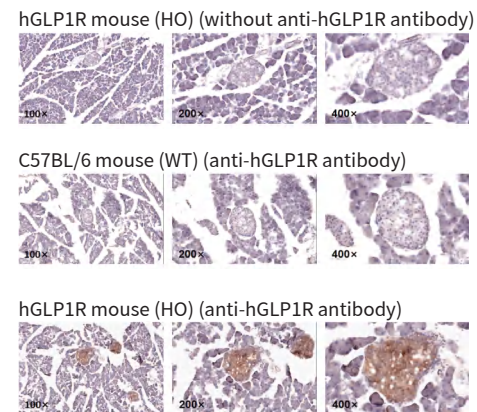
Genetically Engineered Modeling of Diabetes

Strain Name: Ins2-C96Y
Model Catalog Num: NM-KI-190096
Strain state: Repository live
Application: Modeling of T1DM (Akita-like mouse)

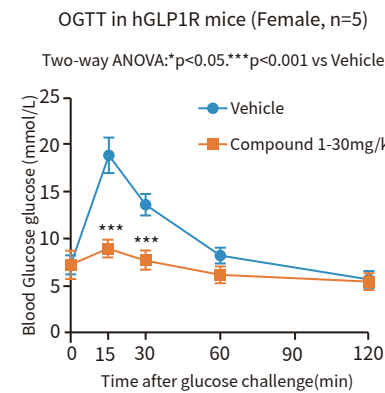


Drug Target-humanized Models for Drug Efficacy Evaluation

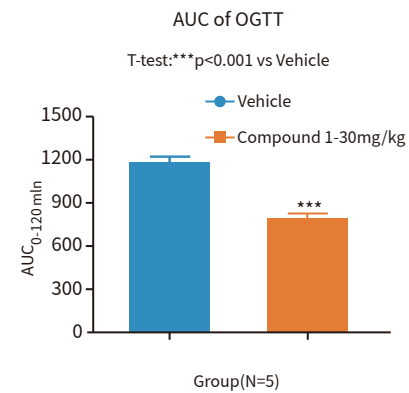
Strain Name: hGLP1R
Model Catalog Num: NM-HU-200220
Strain state: Repository live
Application: Drug target-humanized mouse model for drug efficacy evaluation



Expression profiling of human GLP1R using IHC

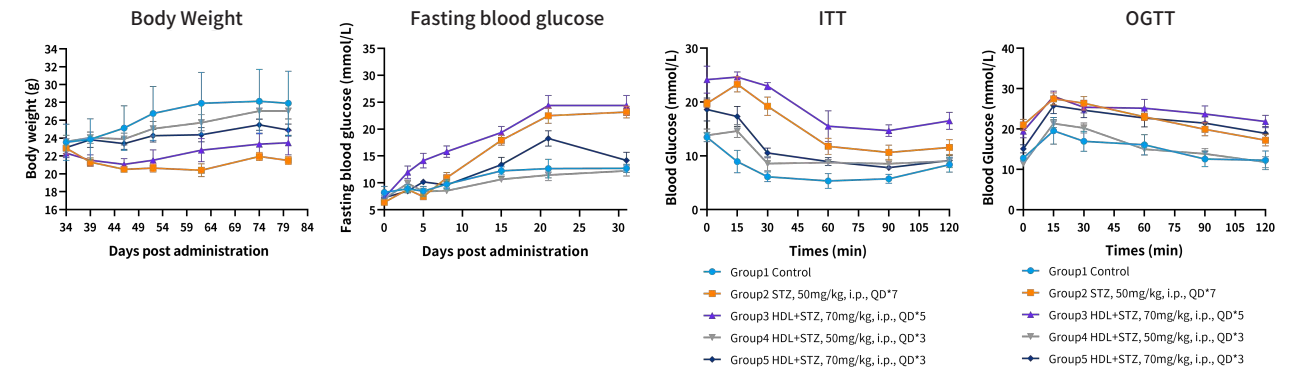


Hypoglycemic efficacy evaluation of the anti-diabetic drug in humanized GLP-1R mice



HFD-STZ Induced Modeling of Diabetes

HFD-STZ Induced T2DM Mouse Model
Application: Modeling of T2DM



More rodent models for studies of varying types of diabetes are listed as follows.
Reach out to us at service.us@modelorg.com to learn more.

Gene Engineered	Catalog Num	Strain Name	Type of Diabetes	Application
Abcc8	NM-KO-2103220	Abcc8-KO	MODY	Modeling of diabetes
Akt2	NM-KO-190742	Akt2-KO	T2DM	Modeling of diabetes
Ar	NM-CKO-00110	Ar-Flox	T2DM	Modeling of diabetes
Ctf1	NM-KO-190546	Fem1b-KO	T2DM	Modeling of diabetes
Fem1b	NM-KO-191164	Foxm1-Flox	T2DM	Modeling of diabetes
Foxm1	NM-CKO-2100393	Abcc8-KO	T2DM	Modeling of diabetes
Foxo1	NM-CKO-200177	Foxo1-Flox	MODY	Modeling of diabetes
Hnf4a	NM-CKO-190062	Hnf4a-Flox	MODY	Modeling of diabetes
Ins2	NM-KI-190096	Ins2-C96Y	T1DM	Modeling of diabetes
Irs1	NM-KO-190827	Irs1-KO	T2DM	Modeling of diabetes
Lep	NM-KO-00034	Lep-KO	T2DM	Modeling of diabetes
Lepr	NM-KO-190663	Lepr-KO	T2DM	Modeling of diabetes
Met	NM-CKO-200328	Met-Flox	GDM	Modeling of diabetes
Phox2a	NM-KO-201323	Phox2a-KO	T2DM	Modeling of diabetes
Prlr	NM-CKO-210028	Prlr-Flox	GDM	Modeling of diabetes
Senp1	NM-CKO-200277	Senp1-Flox	T1DM	Modeling of diabetes
Tgm2	NM-KO-191051	Tgm2-KO	MODY	Modeling of diabetes
GCGR	NM-HU-215004	hGCGR	None	GCGR-humanized models for drug discovery
GLP1R	NR-HU-225066	hGCGR(SD)	None	GCGR-humanized models for drug discovery
GLP1R	NM-HU-200220	hGLP1R	None	GLP1R-humanized models for drug discovery

