

MC38-hCD47/hPD-L1

Strain Information

Cat. NO.	NM-S13-TM07
Cell Line	MC38- <i>Cd274</i> ^{em1(hPDL1)} <i>Cd47</i> ^{em1(hCD47)/Smoc}
Strain State	Validation of pharmacodynamic assays completed
Model Description	The endogenous mouse Cd274(also known as PD-L1) and Cd47 gene was replaced by human PDL1 and CD47 gene.
	*Literature published using this strain should indicate: MC38-hCD47/hPD-L1 cell line (Cat. NO. NM-S13-TM07) was purchased from Shanghai Model Organisms Center, Inc..

Validation Data

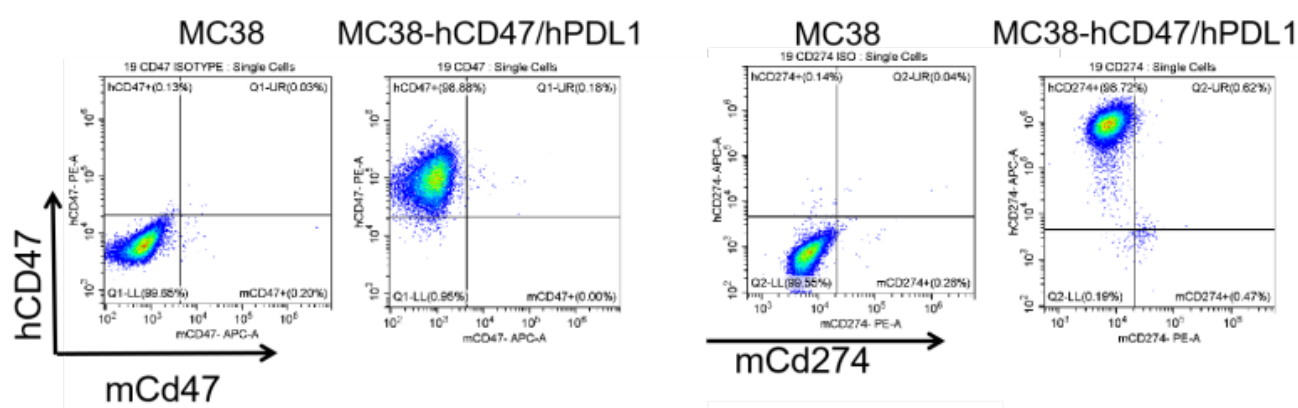


Figure 1. hCD47/hPDL1 expression in wild-type MC38 and MC38-hCD47/hPDL1 cell lines.

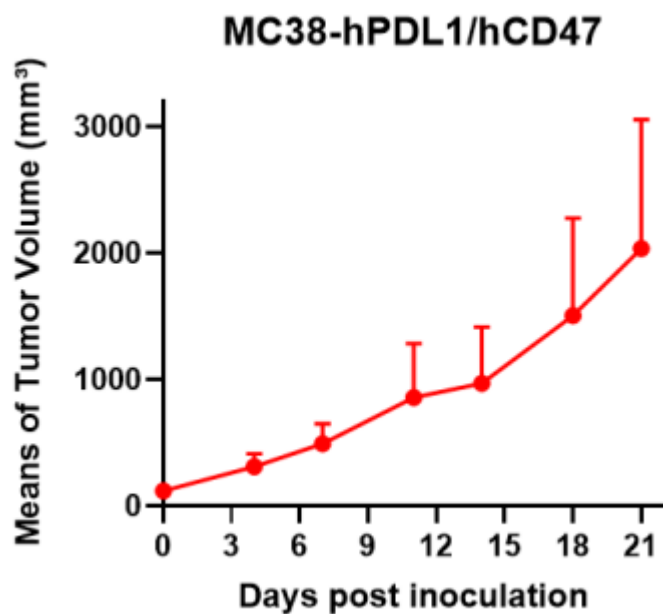


Figure 2. Tumor growth curve of MC38-hCD47/hPDL1 syngeneic model (n=4).

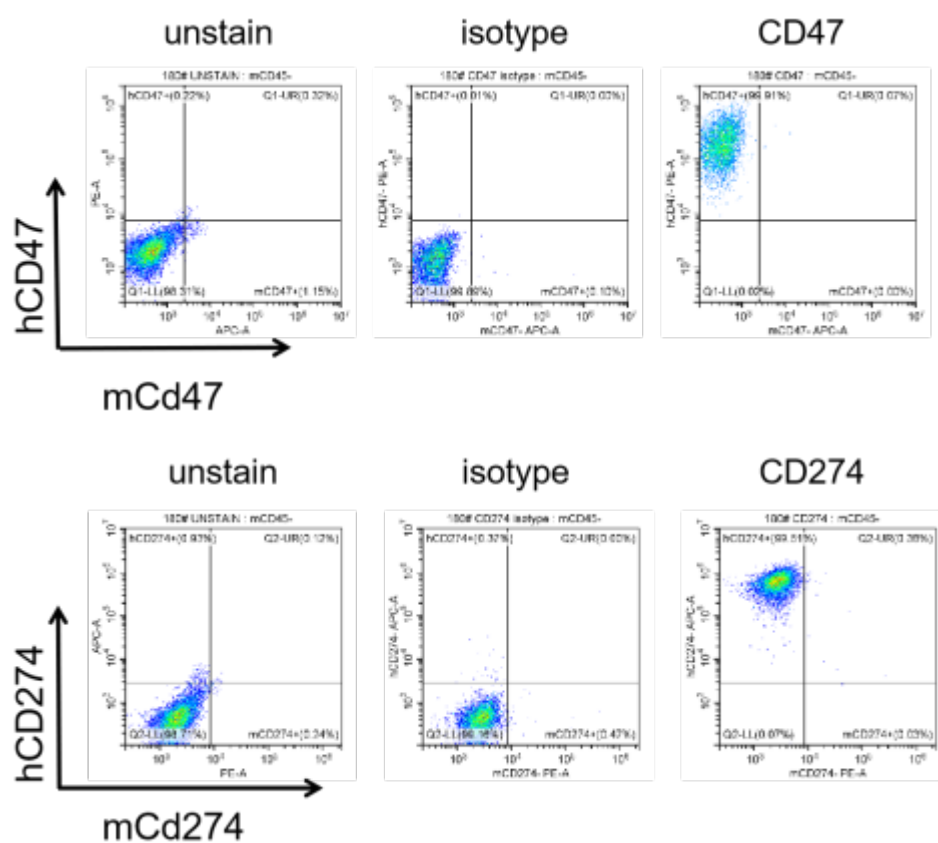


Figure 3. The expression of hCD47/hPDL1 in humanized modified tumors by FACS.

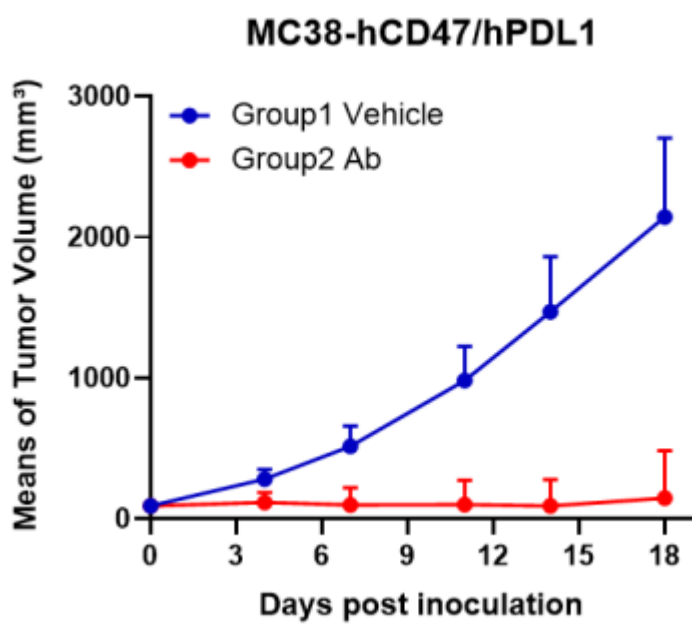


Figure 4. Antitumor activity of Bispecific-antibody in two different treatment group (n=6).