

Pgr-IRES-Cre

Nomenclature	C57BL/6Smoc- <i>Pgr</i> ^{em1(IRES-Cre)Smoc}
Cat. NO.	NM-KI-200150
Strain State	Repository Live

Gene Summary

Gene Symbol Pgr	Synonyms	PR; PR-A; PR-B; NR3C3; BB114106; 9930019P03Rik
	NCBI ID	18667
	MGI ID	97567
	Ensembl ID	ENSMUSG00000031870
	Human Ortholog	PGR

Model Description

A IRES-Cre expression cassette was knocked into the Pgr gene stop codon site.

Research Application: Cre recombinase tool

*Literature published using this strain should indicate: Pgr-IRES-Cre mice (Cat. NO. NM-KI-200150) were purchased from Shanghai Model Organisms Center, Inc..

Validation Data

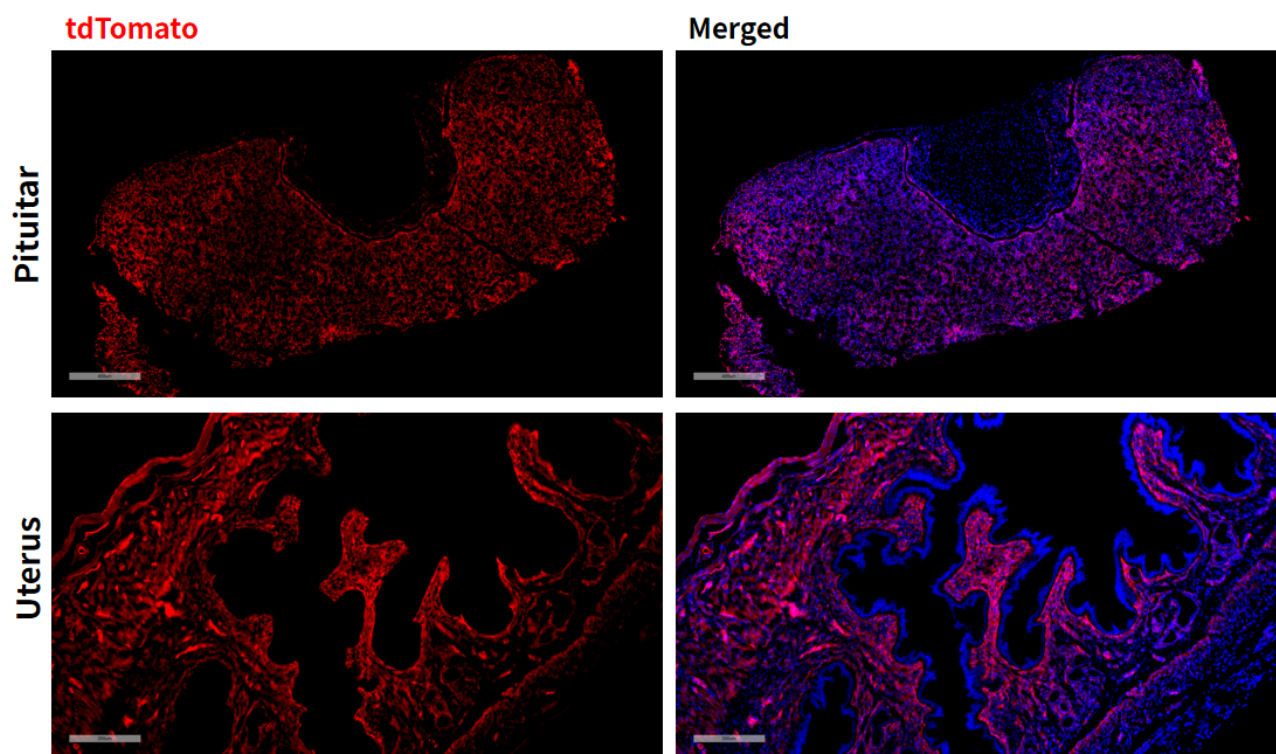


Fig 1. Cre-mediated recombination in pituitary and uterus of *PgrCre/+; Rosa26tdTomato/+* mice.

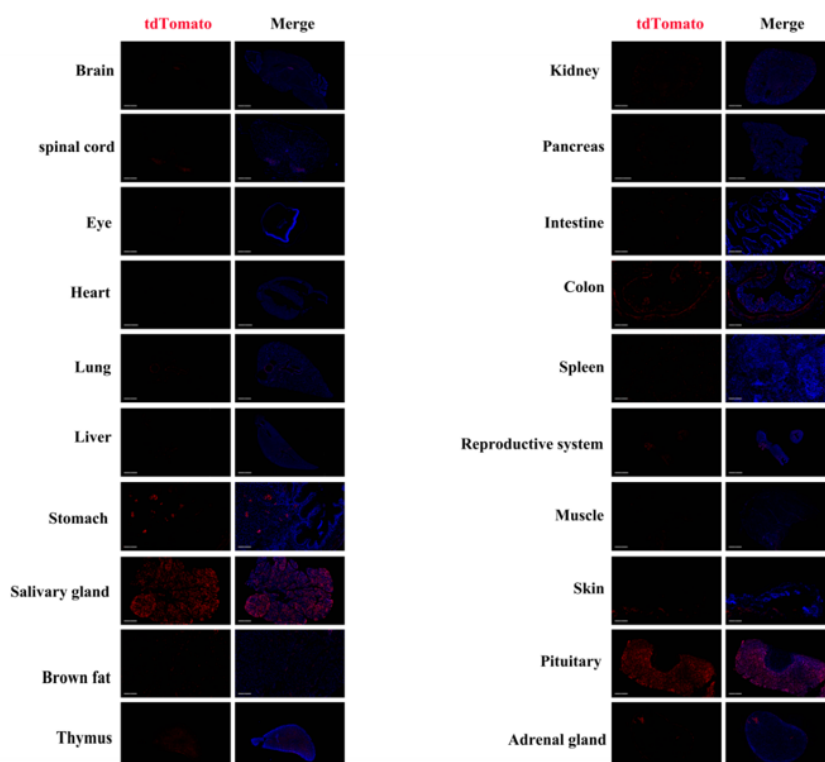


Fig 2. Detection of tdTomato(red) in various tissues of *PgrCre/+; Rosa26tdTomato/+* mice. Expression tissues include: hippocampus, spinal cord, retina, lung, liver, stomach, salivary gland, brown fat, thymus, kidney, pancreas, small intestine, colon, spleen, ovary, uterus, fallopian tube, pituitary gland, adrenal gland. A few cells expressed in heart, muscle, skin. (13.5-week old, female) (For more detailed information please contact our technical advisor.)

