

# Neto1-Cre

<b>Nomenclature</b>	C57BL/6Smoc- <i>Neto1</i> <sup>em1(iCre-pA)Smoc</sup>
<b>Cat. NO.</b>	NM-KI-200112
<b>Strain State</b>	Embryo cryopreservation

## Gene Summary

<b>Gene Symbol</b> <b>Neto1</b>	<b>Synonyms</b>	Btcl1; AI851453; C130005O10Rik
	<b>NCBI ID</b>	<a href="#">246317</a>
	<b>MGI ID</b>	<a href="#">2180216</a>
	<b>Ensembl ID</b>	<a href="#">ENSMUSG00000050321</a>
	<b>Human Ortholog</b>	NETO1

## Model Description

A iCre-pA expression cassette was knocked into the Neto1 gene start codon site.

**Research Application:** Cre recombinase tool

\*Literature published using this strain should indicate: Neto1-Cre mice (Cat. NO. NM-KI-200112) were purchased from Shanghai Model Organisms Center, Inc..

## Validation Data

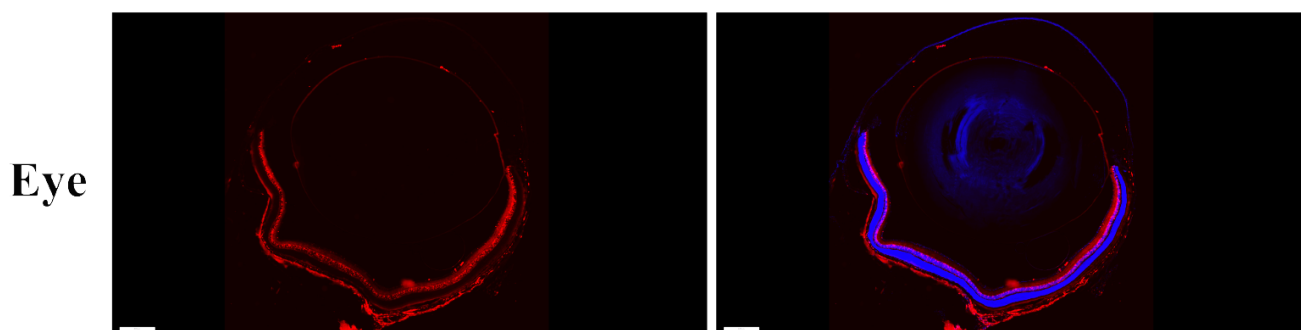


Figure 1: Cre-mediated recombination in the retina of Neto1iCre/+; Rosa26tdTomato/+ mouse. Detection of tdTomato (red) in the retina of Neto1iCre/+; Rosa26tdTomato/+ mouse.

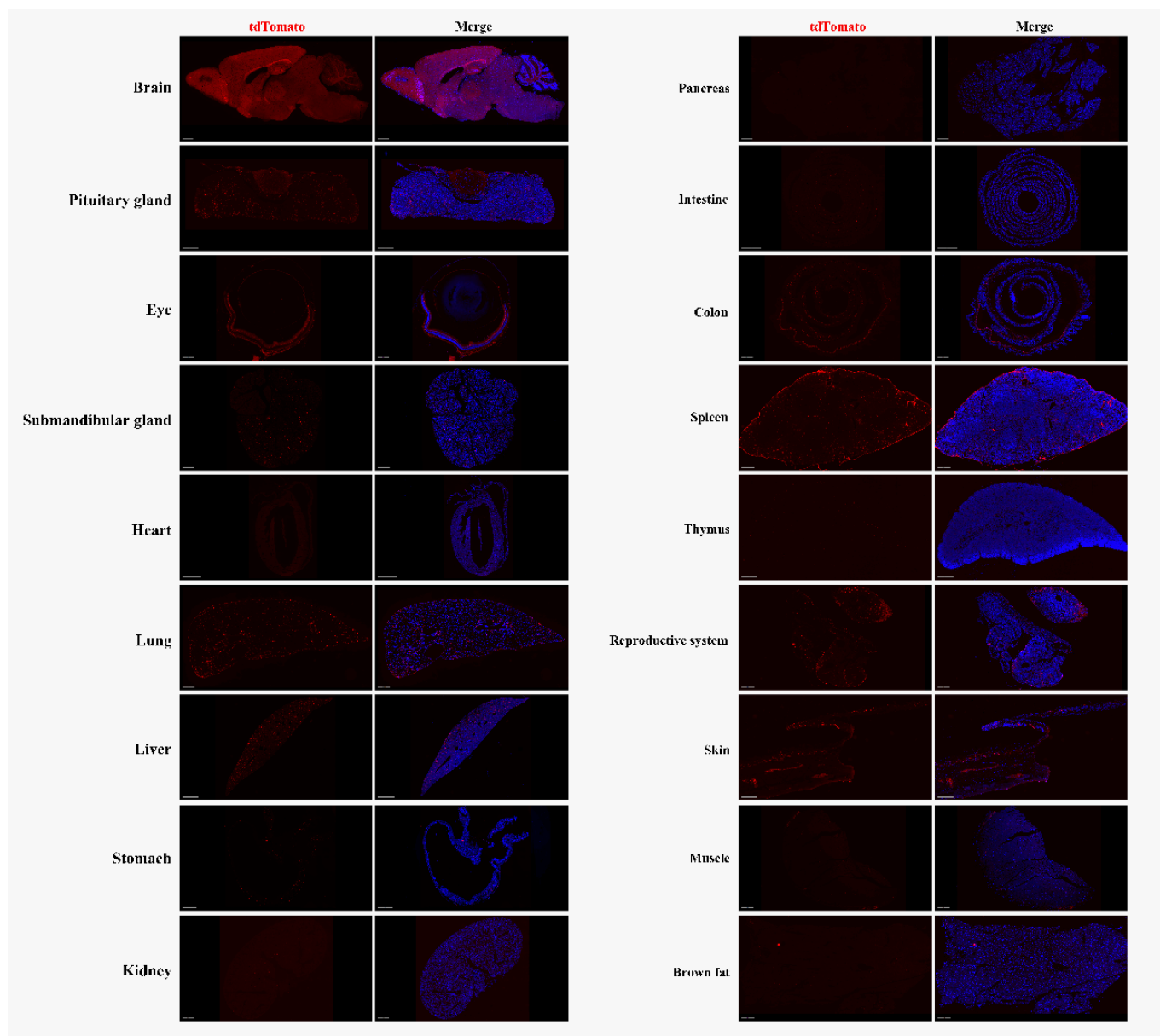


Figure 2: Detection of tdTomato (red) in various tissues of Neto1iCre/+; Rosa26tdTomato/+ mice.