

# NUGC4

## Strain Information

Cat. NO.	NM-W06
Cell Line	NUGC4
Strain State	Validation of tumorigenic capacity completed
Model	Human cell line derived from signet ring cell carcinoma of stomach.
Description	*Literature published using this strain should indicate: NUGC4 cell line (Cat. NO. NM-W06) was purchased from Shanghai Model Organisms Center, Inc..

## Validation Data

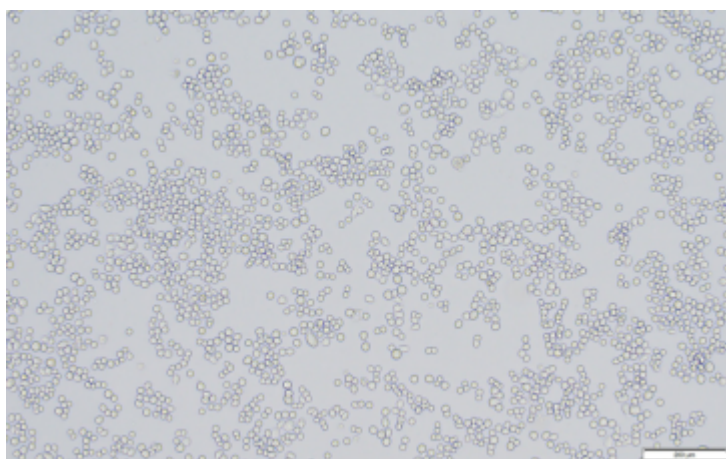
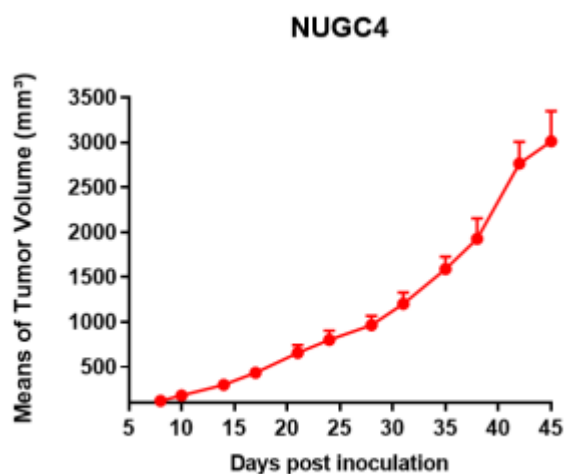
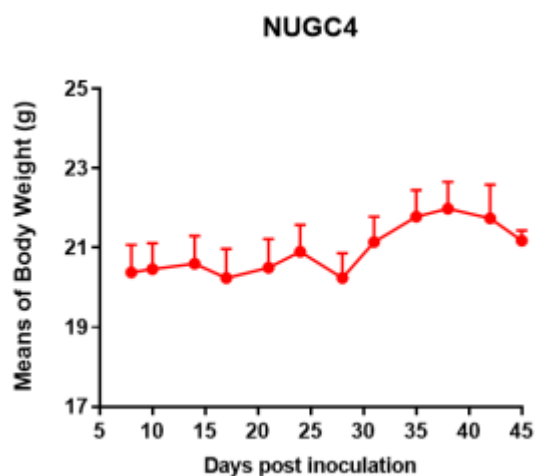


Fig1. Morphology of NUGC4 cell line.



A



B

Fig2. Analysis of Tumorigenesis in M-NSG mice (n=5) . A Tumor volume was measured by time. B Body weight was simultaneously checked.

\*Wild-type cell lines are not for sale, and only applied to construction of tumor bearing mice and in-vivo efficacy studies.