

# HT29

## Strain Information

Cat. NO.	NM-J02
Cell Line	HT29
Strain State	Validation of tumorigenic capacity completed
Model Description	HT-29 is a cell line with epithelial morphology that was isolated in 1964 from a primary tumor obtained from a 44-year-old, White, female patient with colorectal adenocarcinoma.  *Literature published using this strain should indicate: HT29 cell line (Cat. NO. NM-J02) was purchased from Shanghai Model Organisms Center, Inc..

## Validation Data

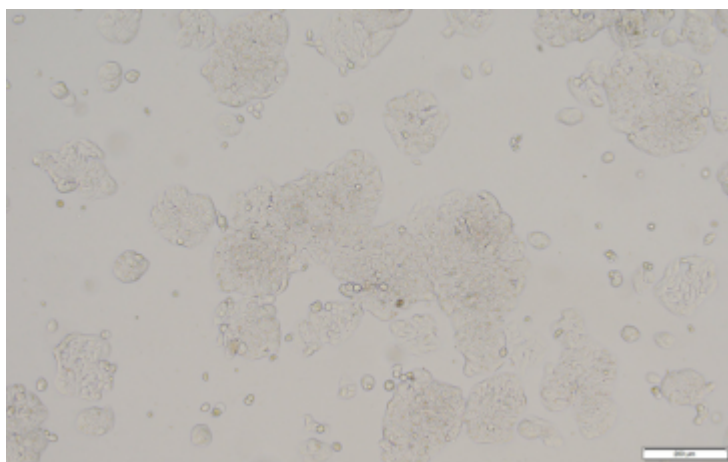
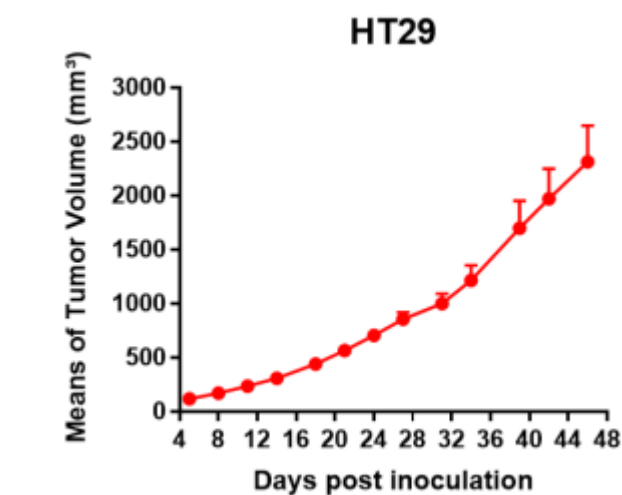
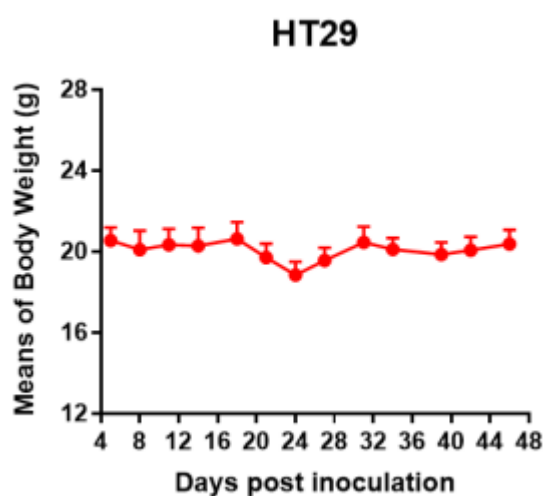


Fig1. Morphology of HT29 cell line.



A



B

Fig2. Analysis of Tumorigenesis in M-NSG mice (n=5) . HT29 cells were subcutaneously inoculated in M-NSG mice. a Tumor volume was measured by time. b Body weight was simultaneously checked.

\*Wild-type cell lines are not for sale, and only applied to construction of tumor bearing mice and in-vivo efficacy studies.