

PANC-1

Strain Information

Cat. NO.	NM-YX01A
Cell Line	PANC-1
Strain State	Validation of tumorigenic capacity completed
Model Description	Established from a pancreatic carcinoma of ductal origin from a 56-year-old Caucasian male.
	*Literature published using this strain should indicate: PANC-1 cell line (Cat. NO. NM-YX01A) was purchased from Shanghai Model Organisms Center, Inc..

Validation Data

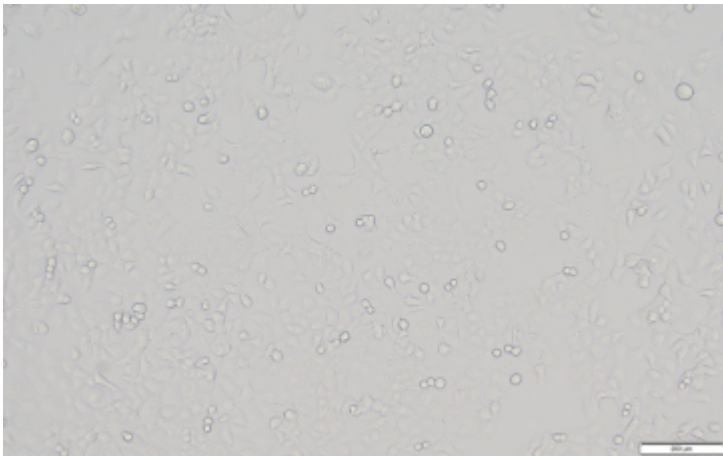
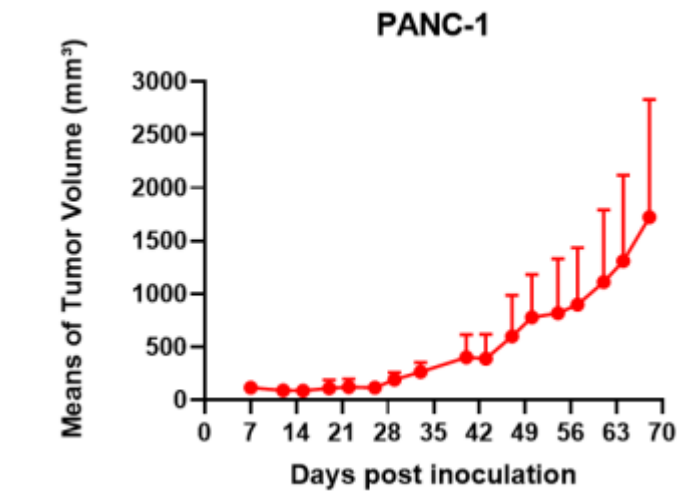
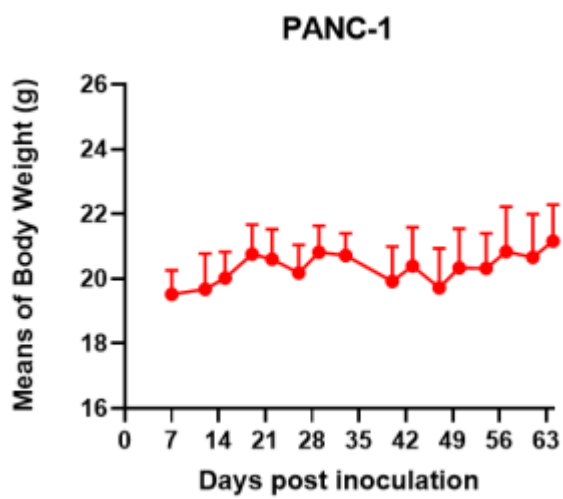


Fig1. Morphology of PANC-1 cell line.



A



B

Fig2. Analysis of Tumorigenesis in M-NSG mice (n=5) . A Tumor volume was measured by time. B Body weight was simultaneously checked.

*Wild-type cell lines are not for sale, and only applied to construction of tumor bearing mice and in-vivo efficacy studies.