

# Aspc-1

## Strain Information

Cat. NO.	NM-Y01
Cell Line	Aspc-1
Strain State	Validation of tumorigenic capacity completed
Model Description	The AsPC-1 epithelial cell line is isolated from pancreatic tissue of a 62-year-old Caucasian female patient with metastatic pancreatic adenocarcinoma.
	*Literature published using this strain should indicate: Aspc-1 cell line (Cat. NO. NM-Y01) was purchased from Shanghai Model Organisms Center, Inc..

## Validation Data

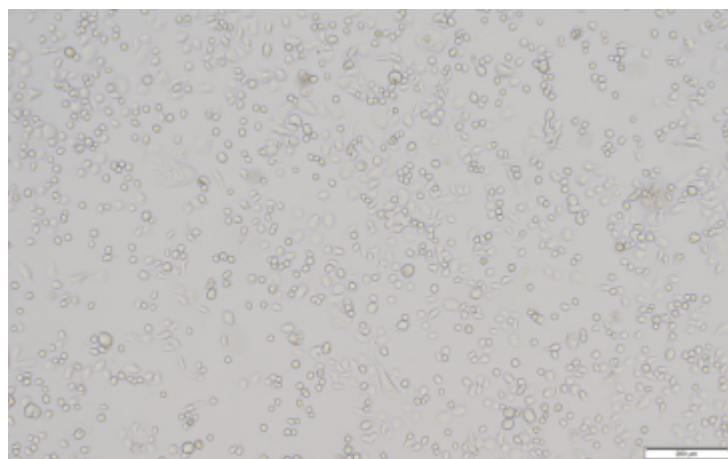


Fig1. Morphology of Aspc-1 cell line.

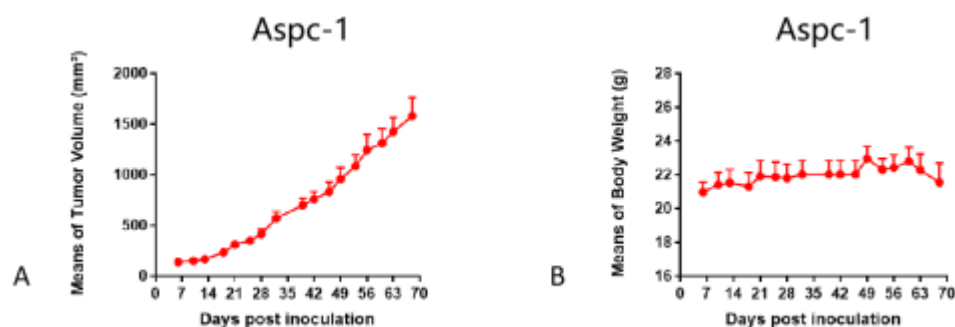


Fig2. Analysis of Tumorigenesis in M-NSG mice (n=6) . a Tumor volume was measured by time. b Body weight was simultaneously checked.

\*Wild-type cell lines are not for sale, and only applied to construction of tumor bearing mice and in-vivo efficacy studies.

---