

# A-498

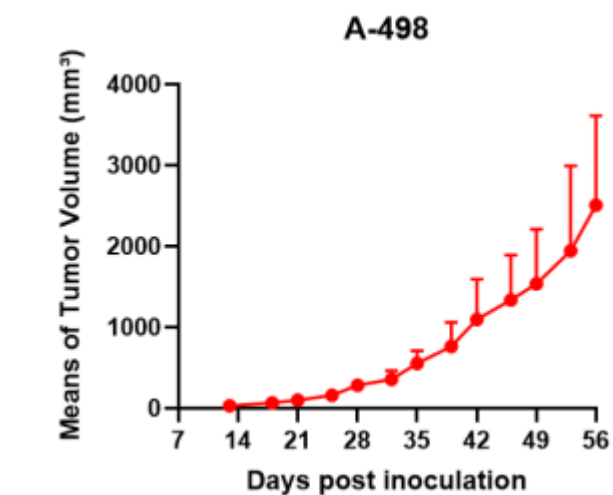
## Strain Information

Cat. NO.	NM-SA04
Cell Line	A-498
Strain State	Validation of tumorigenic capacity completed
Model Description	A-498 is a cell line with epithelial morphology that was isolated from kidney tissue obtained from a 52-year-old, female, kidney cancer patient.  *Literature published using this strain should indicate: A-498 cell line (Cat. NO. NM-SA04) was purchased from Shanghai Model Organisms Center, Inc..

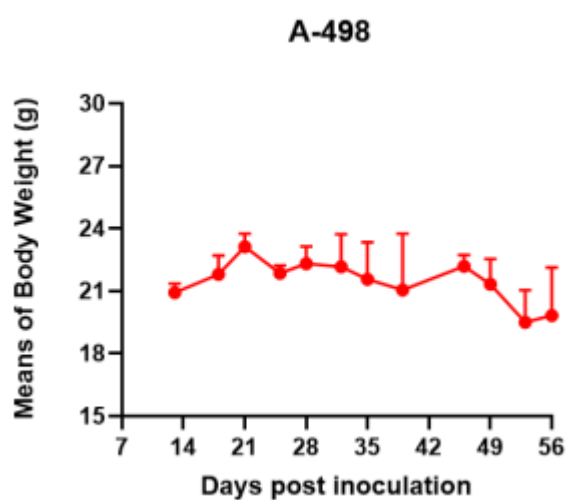
## Validation Data



Fig1. Morphology of A-498 cell line.



A



B

Fig2. Analysis of Tumorigenesis in M-NSG mice (n=8). a Tumor volume was measured by time. b Body weight was simultaneously checked.

\*Wild-type cell lines are not for sale, and only applied to construction of tumor bearing mice and in-vivo efficacy studies.