

# KPC

## Strain Information

Cat. NO.	NM-YD04
Cell Line	KPC
Strain State	Validation of tumorigenic capacity completed
Model	The KPC Cell Line was derived from the KPC mice(NM-KI-210096).
Description	*Literature published using this strain should indicate: KPC cell line (Cat. NO. NM-YD04) was purchased from Shanghai Model Organisms Center, Inc..

## Validation Data

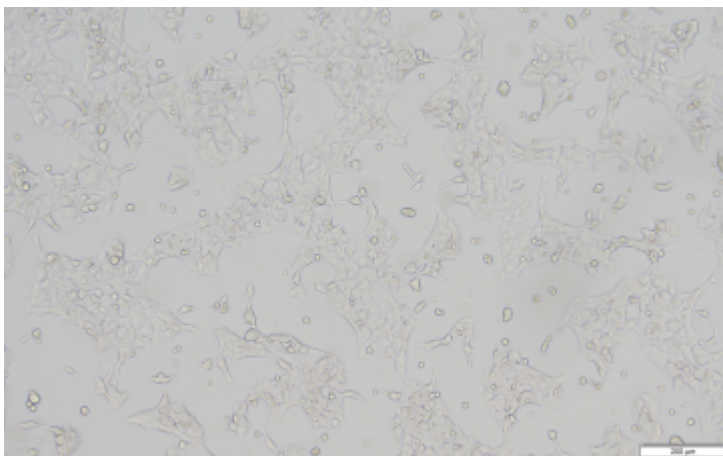
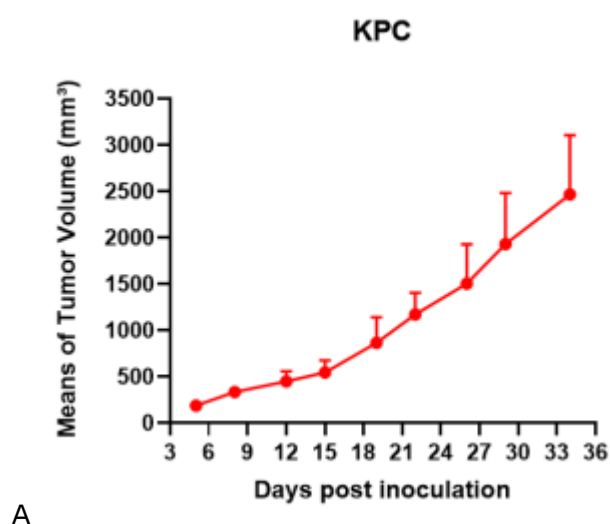
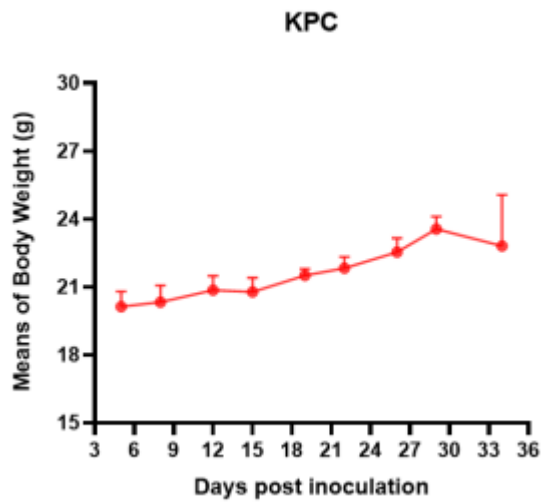


Fig1. Morphology of KPC cell line.





B

Fig2. Analysis of Tumorigenesis in C57BL/6 mice (n=6) . A Tumor volume was measured by time. B Body weight was simultaneously checked.