

KLN 205

Strain Information

Cat. NO.	NM-S34A
Cell Line	KLN 205
Strain State	Validation of tumorigenic capacity completed
Model Description	KLN205 is a murine lung squamous cell carcinoma cell line, originally obtained from the Nettesheim lung carcinoma in DBA/2 mice. *Literature published using this strain should indicate: KLN 205 cell line (Cat. NO. NM-S34A) was purchased from Shanghai Model Organisms Center, Inc..

Validation Data

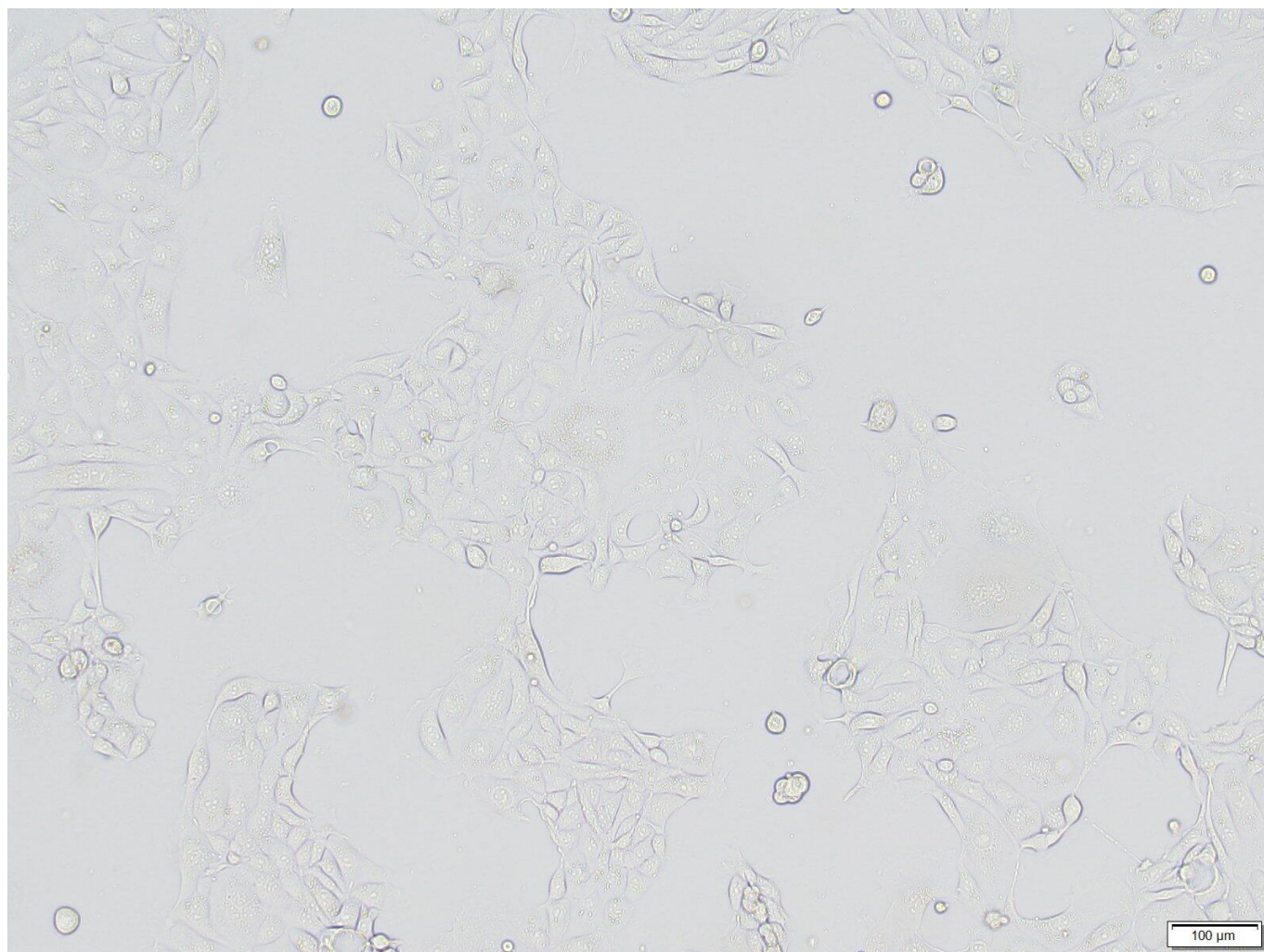
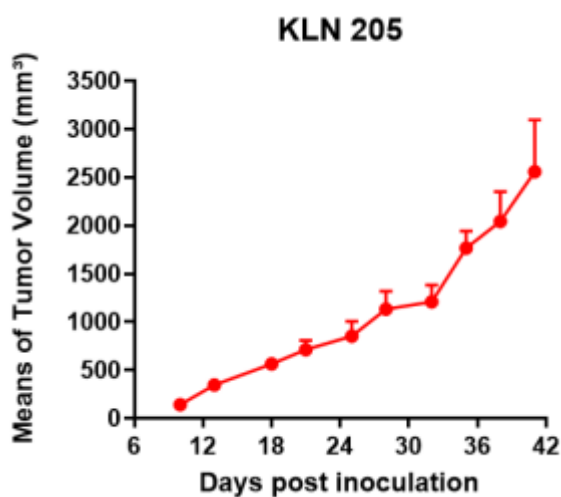
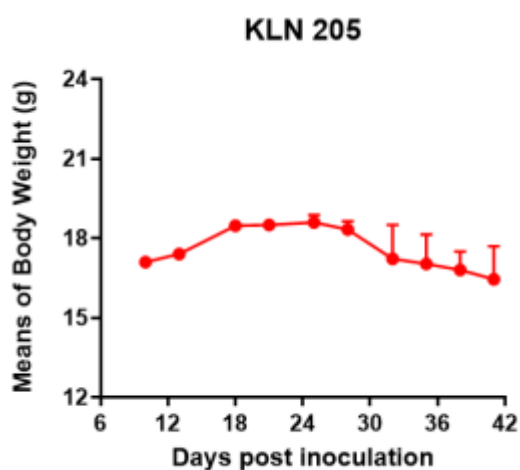


Fig1. Morphology of KLN 205 cell line.



A



B

Fig2. Analysis of Tumorigenesis in DBA/2 mice (n=4) . A Tumor volume was measured by time. B Body weight was simultaneously checked.

*Wild-type cell lines are not for sale, and only applied to construction of tumor bearing mice and in-vivo efficacy studies.