

# C1498

## Strain Information

Cat. NO.	NM-S28A
Cell Line	C1498
Strain State	Validation of tumorigenic capacity completed
Model Description	C1498 is an aggressive acute myeloid leukemia (AML) cell line which originated spontaneously in a C57BL/6 mouse.  *Literature published using this strain should indicate: C1498 cell line (Cat. NO. NM-S28A) was purchased from Shanghai Model Organisms Center, Inc..

## Validation Data

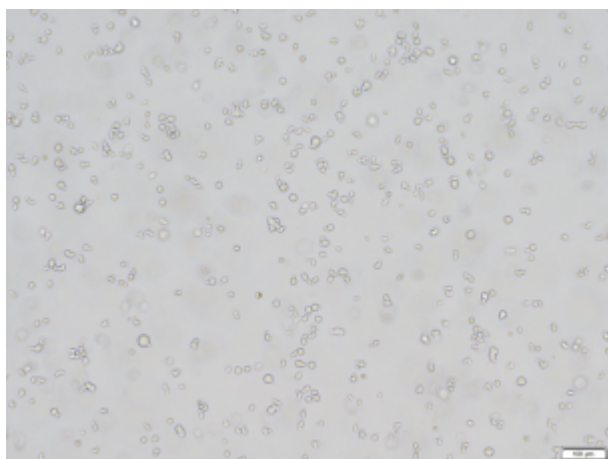
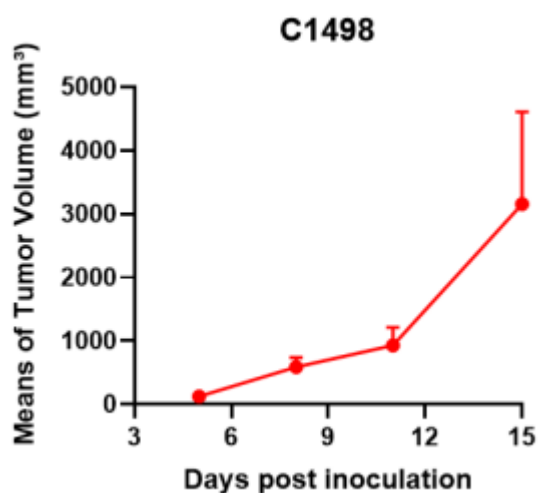
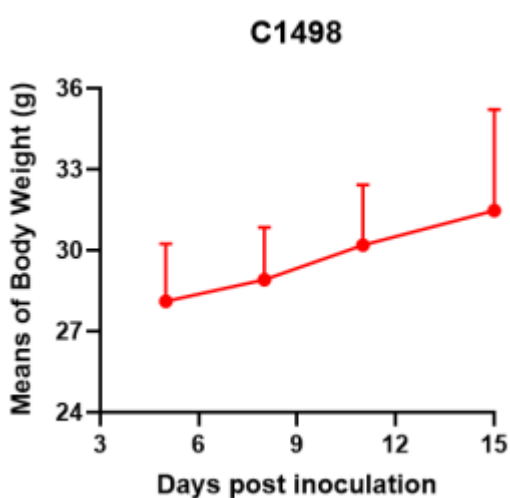


Fig1. Morphology of C1498 cell line.



A



B

Fig2. Analysis of Tumorigenesis in C57BL/6 mice (n=5) . a Tumor volume was measured by time. b Body weight was simultaneously checked.

\*Wild-type cell lines are not for sale, and only applied to construction of tumor bearing mice and in-vivo efficacy studies.