

# CT26.WT

## Strain Information

Cat. NO.	NM-S24A
Cell Line	CT26.WT
Strain State	Validation of tumorigenic capacity completed
Model Description	CT26 is an N-nitroso-N-methylurethane- (NNMU) induced, undifferentiated colon carcinoma cell line. It was cloned to generate the cell line designated CT26.WT ( ATCC CRL-2638 ).
	*Literature published using this strain should indicate: CT26.WT cell line (Cat. NO. NM-S24A) was purchased from Shanghai Model Organisms Center, Inc..

## Validation Data

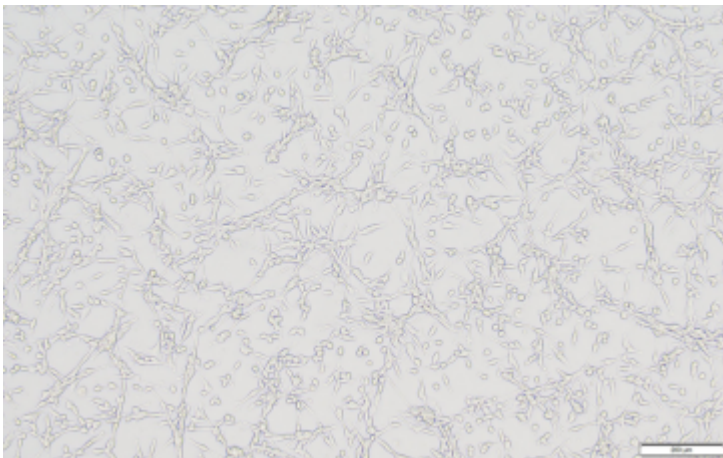


Fig1. Morphology of CT26.WT cell line.

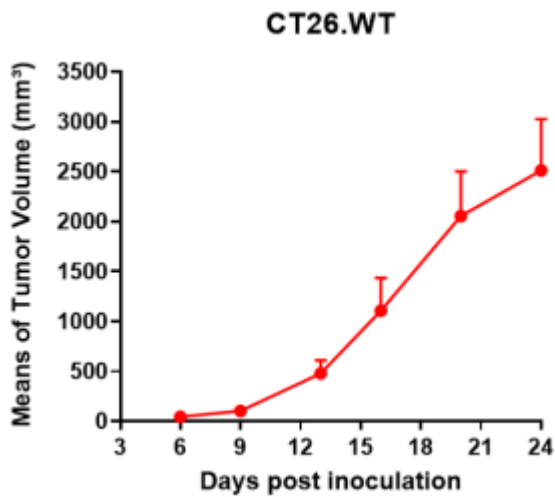
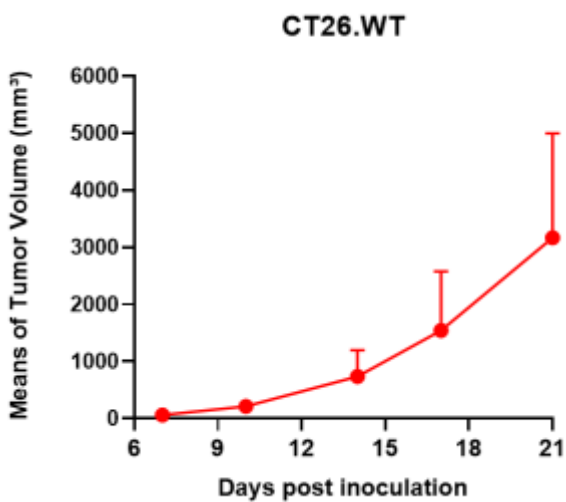
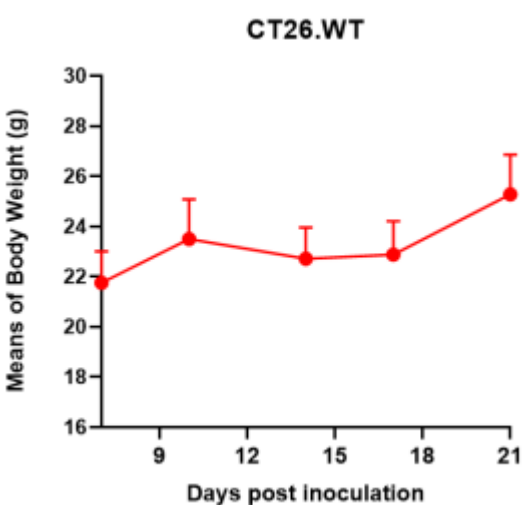


Fig2. Analysis of Tumorigenesis in Balb/c mice (n=4) .



A



B

Fig3. Analysis of Tumorigenesis in hSIRPA/hCD47(Balb/c) mice (n=5) . a Tumor volume was measured by time. b Body weight was simultaneously checked.

\*Wild-type cell lines are not for sale, and only applied to construction of tumor bearing mice and



---

in-vivo efficacy studies.

---