

# SK-MEL-5

## Strain Information

Cat. NO.	NM-KH02
Cell Line	SK-MEL-5
Strain State	Validation of tumorigenic capacity completed
Model	Human malignant melanoma cell line
Description	*Literature published using this strain should indicate: SK-MEL-5 cell line (Cat. NO. NM-KH02) was purchased from Shanghai Model Organisms Center, Inc..

## Validation Data

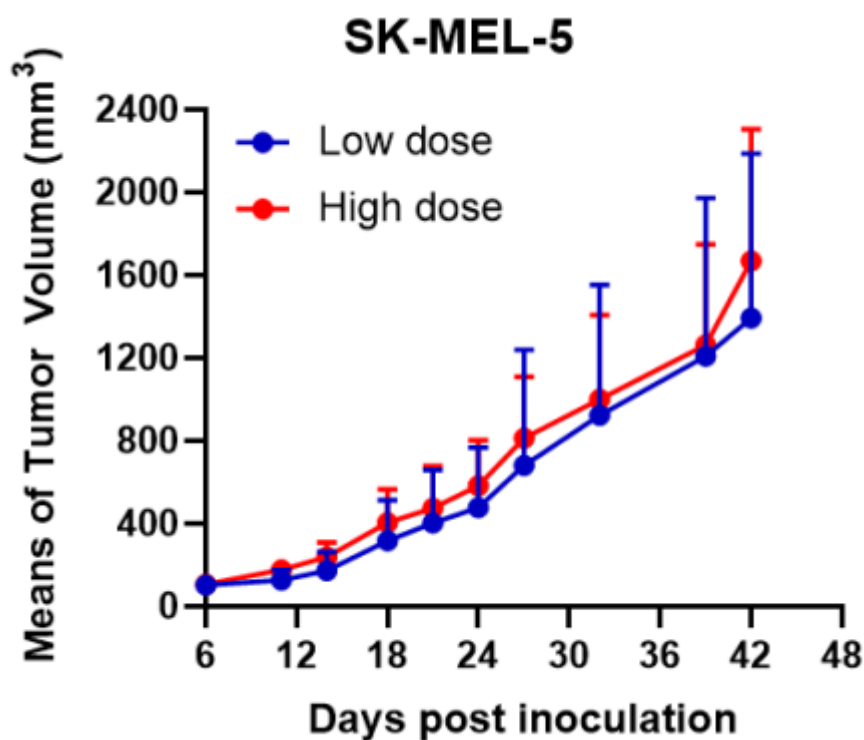


Figure 1. Tumor growth curve of SK-MEL-5 xenograft model (n=4)

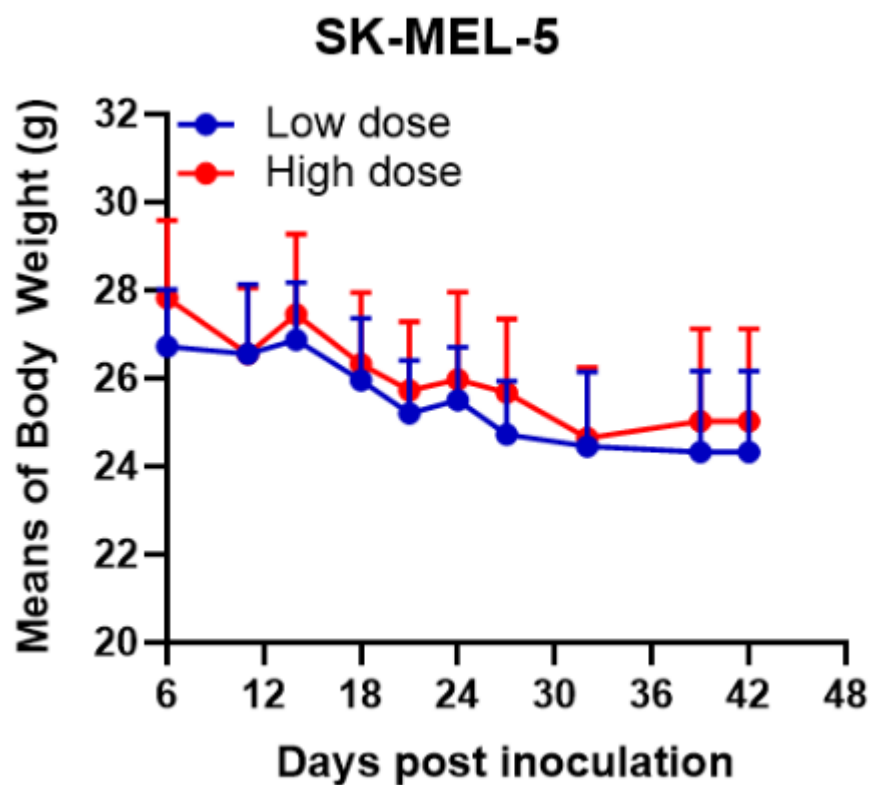


Figure 2. Body weight change of SK-MEL-5 xenograft model (n=4)

\*Wildtype cell lines are not for sale, and only applied to construction of tumor bearing mice and i n-vivo efficacy studies.