

# EBC-1

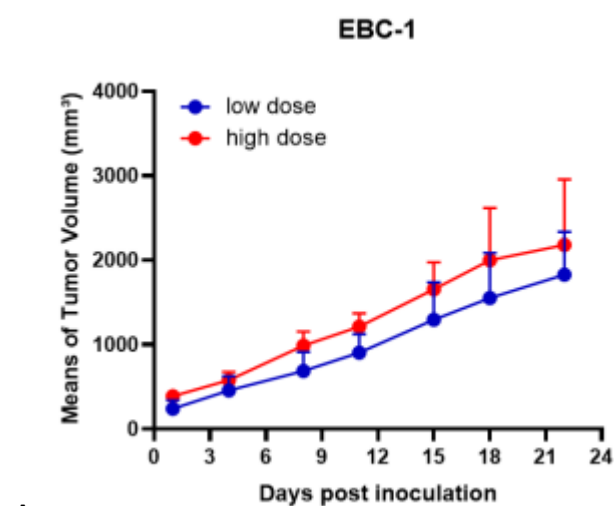
## Strain Information

Cat. NO.	NM-F23
Cell Line	EBC-1
Strain State	Validation of tumorigenic capacity completed
Model Description	<p>The EBC-1 line was established from a metastatic skin tumor of a patient with squamous cell carcinoma of the lung.</p> <p>*Literature published using this strain should indicate: EBC-1 cell line (Cat. NO. NM-F23) was purchased from Shanghai Model Organisms Center, Inc..</p>

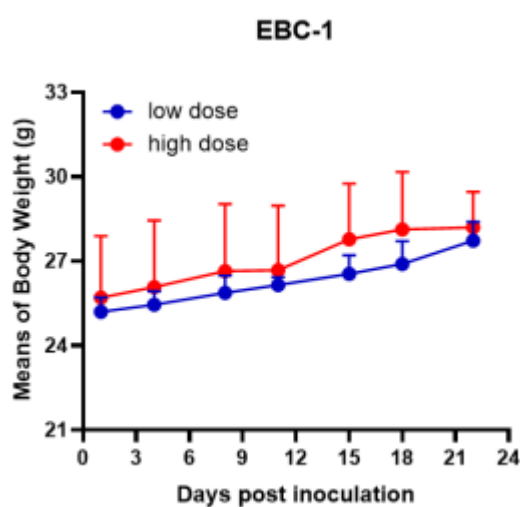
## Validation Data



Fig1. Morphology of EBC-1 cell line.



A



B

Fig2. Analysis of Tumorigenesis in M-NSG mice (n=4) . a Tumor volume was measured by time. b Body weight was simultaneously checked.

\*Wild-type cell lines are not for sale, and only applied to construction of tumor bearing mice and in-vivo efficacy studies.