

# NCI-H358

## Strain Information

Cat. NO.	NM-F21
Cell Line	NCI-H358
Strain State	Validation of tumorigenic capacity completed
Model	Human non-small cell lung cancer cell line
Description	*Literature published using this strain should indicate: NCI-H358 cell line (Cat. NO. NM-F21) was purchased from Shanghai Model Organisms Center, Inc..

## Validation Data

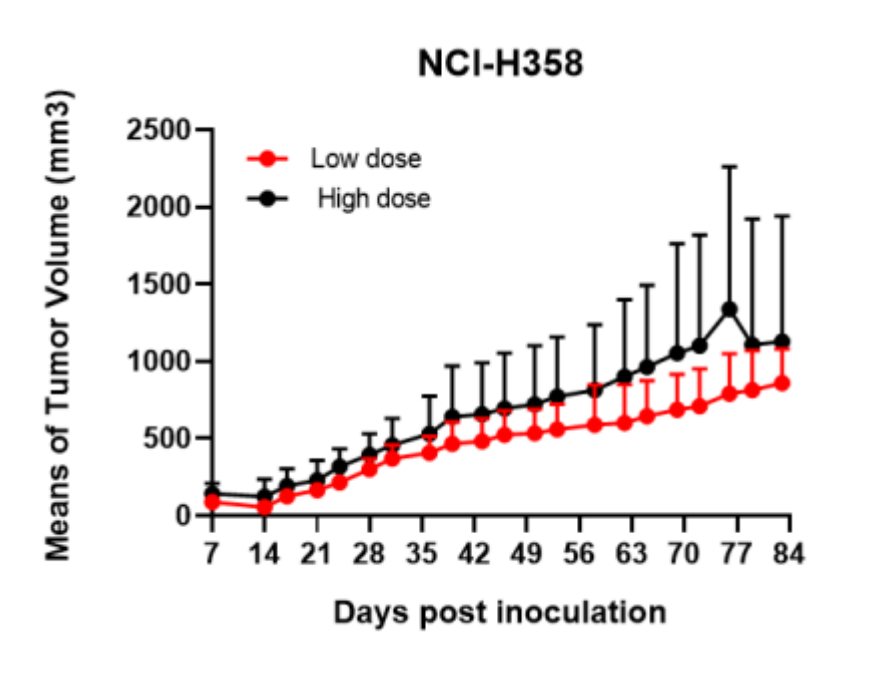


Figure 1. Tumor growth curve of NCI-H358 xenograft model (n=4)

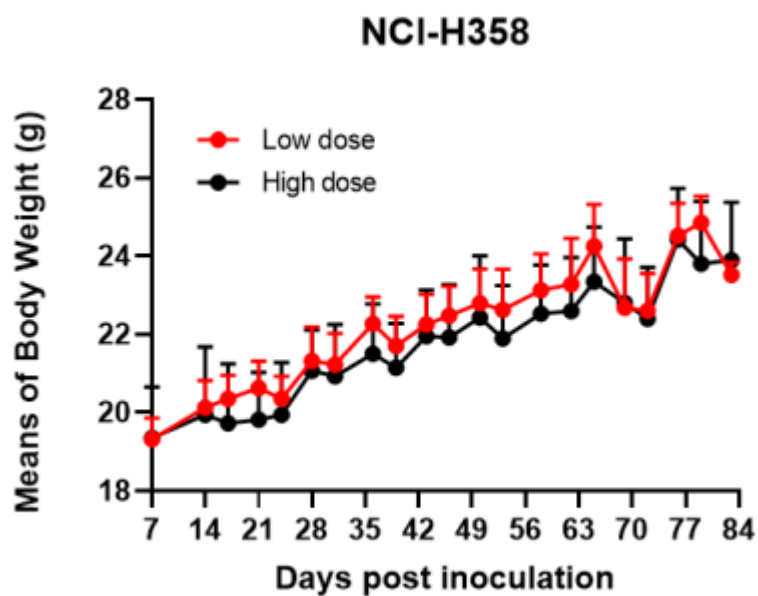


Figure 2. Body weight change of NCI-H358 xenograft model (n=4)

\*Wild-type cell lines are not for sale, and only applied to construction of tumor bearing mice and in-vivo efficacy studies.