

# NCI-H23

## Strain Information

Cat. NO.	NM-F19
Cell Line	NCI-H23
Strain State	Validation of tumorigenic capacity completed
Model Description	NCI-H23 cell line was derived from a lung cancer obtained from a patient prior to therapy.  *Literature published using this strain should indicate: NCI-H23 cell line (Cat. NO. NM-F19) was purchased from Shanghai Model Organisms Center, Inc..

## Validation Data

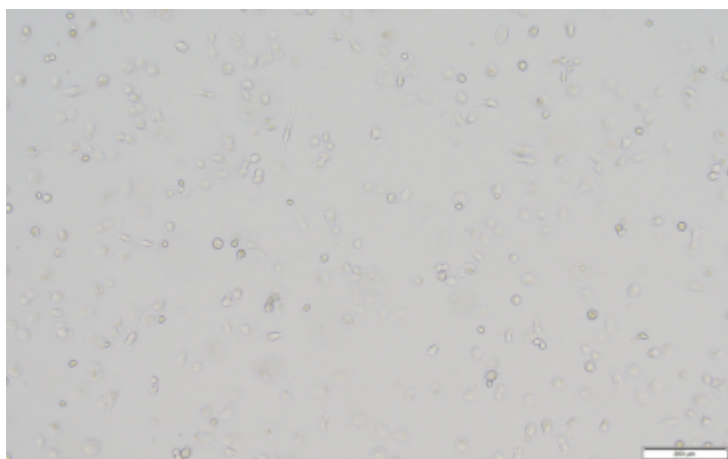
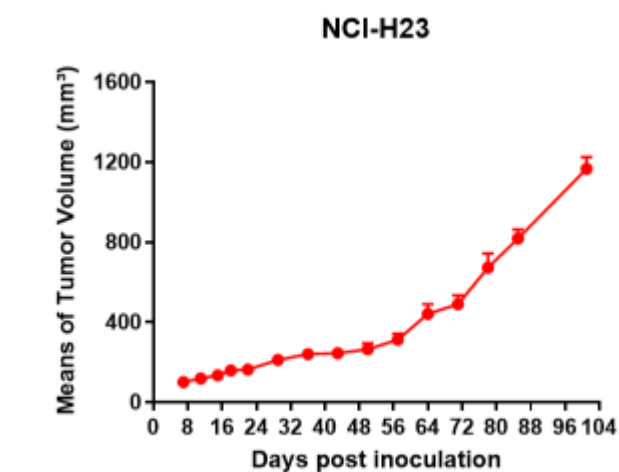
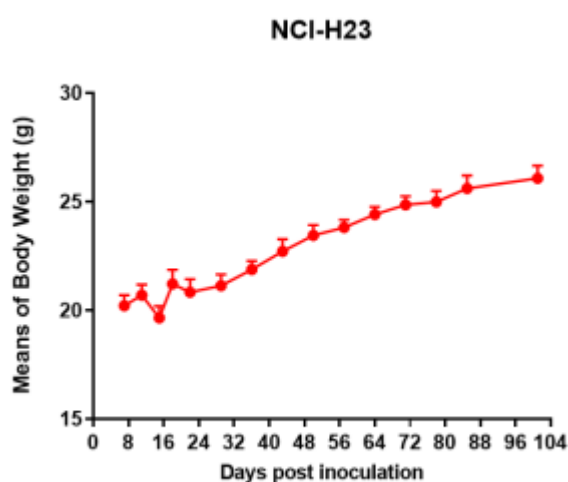


Fig1. Morphology of NCI-H23 cell line.



A



B

Fig2. Analysis of Tumorigenesis in M-NSG mice (n=5) . A Tumor volume was measured by time. B Body weight was simultaneously checked.

\*Wild-type cell lines are not for sale, and only applied to construction of tumor bearing mice and in-vivo efficacy studies.