

Capan-1-Luc

Strain Information

| | |
|--------------|---|
| Cat. NO. | NM-Y03-TG01 |
| Cell Line | Capan-1-Tg(luc)/smoc |
| Strain State | Validation of tumorigenic capacity completed |
| Model | Luciferase-labeled human Capan-1 cell |
| Description | *Literature published using this strain should indicate: Capan-1-Luc cell line (Cat. NO. NM-Y03-TG01) was purchased from Shanghai Model Organisms Center, Inc.. |

Validation Data

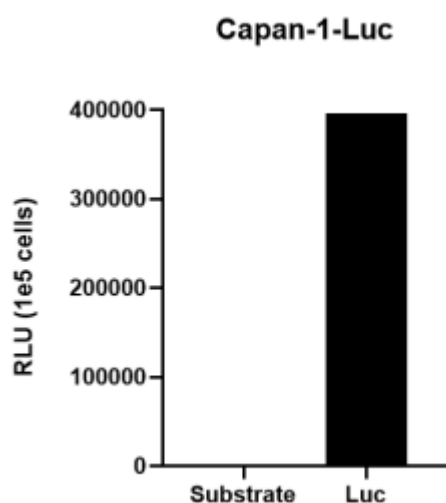


Fig1. Luciferase activity assay of Capan-1-Luc cell line

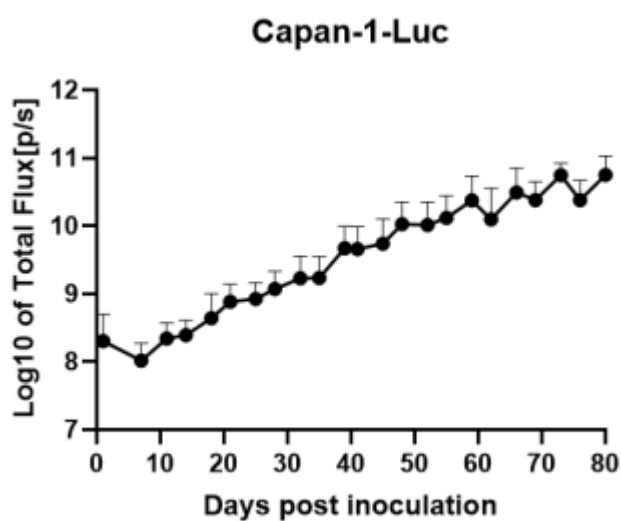


Fig2. Signal increase curve of Capan-1-Luc xenograft model (n=5)

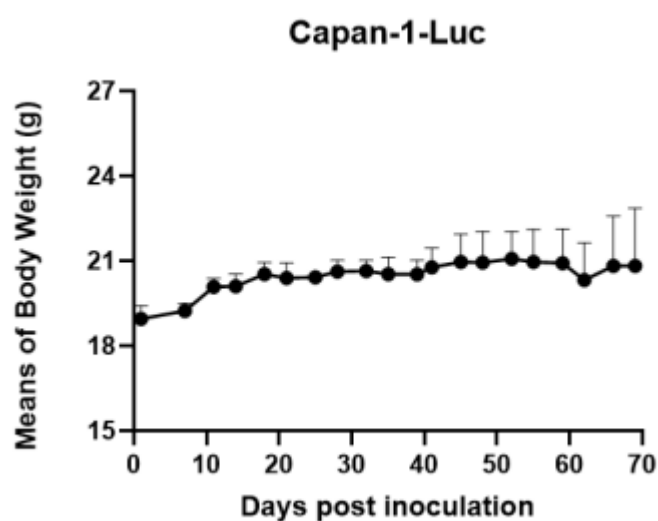


Fig3. Body weight change of Capan-1-Luc xenograft model (n=5)

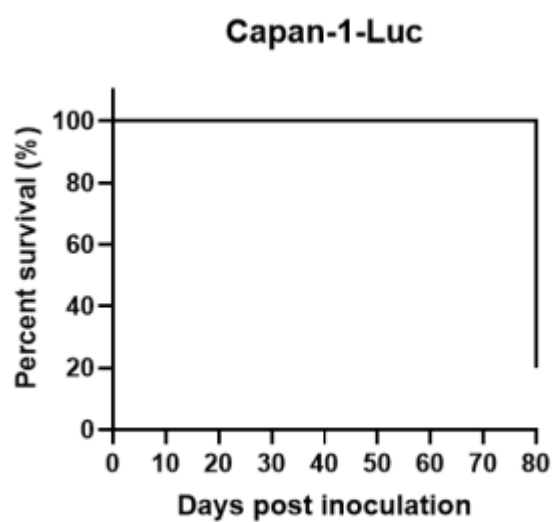


Fig4. Survival curve of Capan-1-Luc xenograft model (n=5)

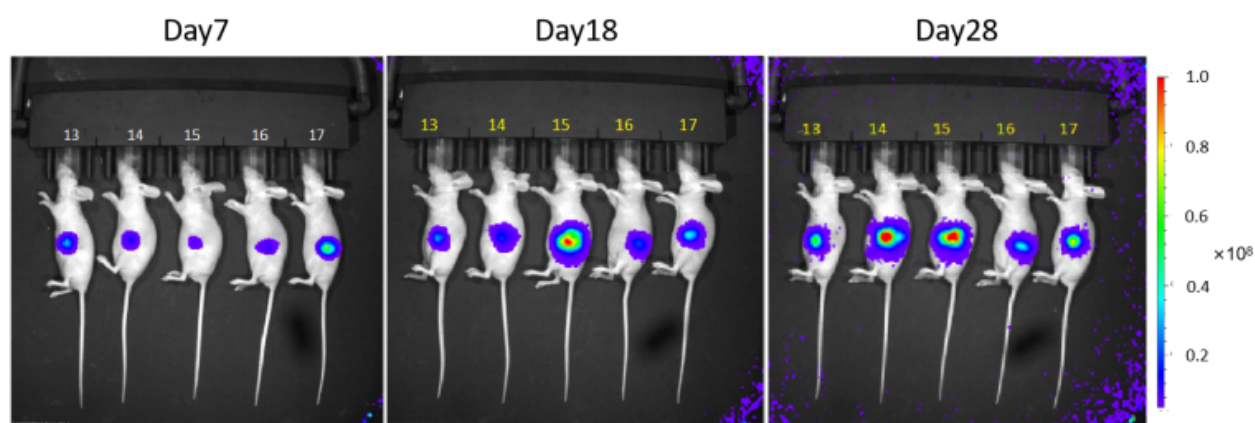


Fig5. Bioluminescence imaging of Capan-1-Luc xenograft mouse model