

4T1-hCD24

Strain Information

Cat. NO.	NM-S07-TM03
Cell Line	4T1- <i>Cd24</i> ^{tm(hCD24)Smoc}
Strain State	Validation of tumorigenic capacity completed
Model	This cell line carry humanized CD24.
Description	*Literature published using this strain should indicate: 4T1-hCD24 cell line (Cat. NO. NM-S07-TM03) was purchased from Shanghai Model Organisms Center, Inc..

Validation Data

1. In vitro Expression of 4T1-hCD24 cell line

The hCD24 protein expression in the 4T1-hCD24 cells were measured by Flow Cytometry. FACS data showed that significant human CD24 expression in the 4T1-hCD24 cell line.

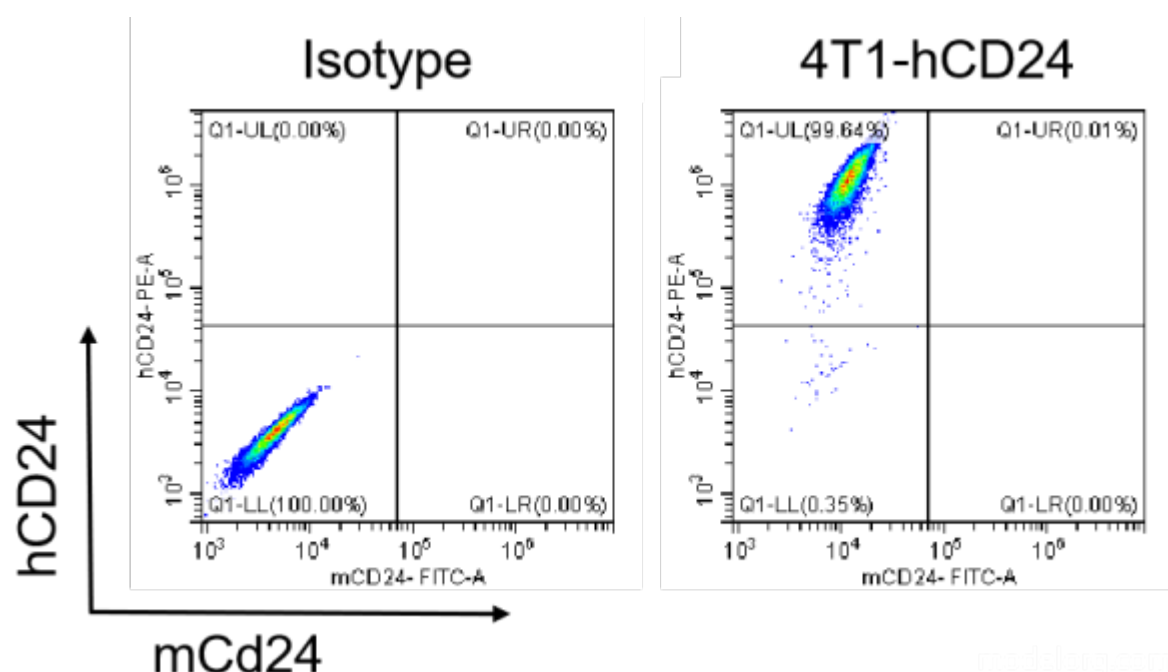


Figure 1. hCD24 expression in 4T1-hCD24 cell line

2. Characterization of in vivo growth kinetics

To test the take rates, and the tumor growth characteristics of 4T1-hCD24 cell line, cells were subcutaneously inoculated into the Balb/c mice. The tumor growth curve was shown in the Fig 2.

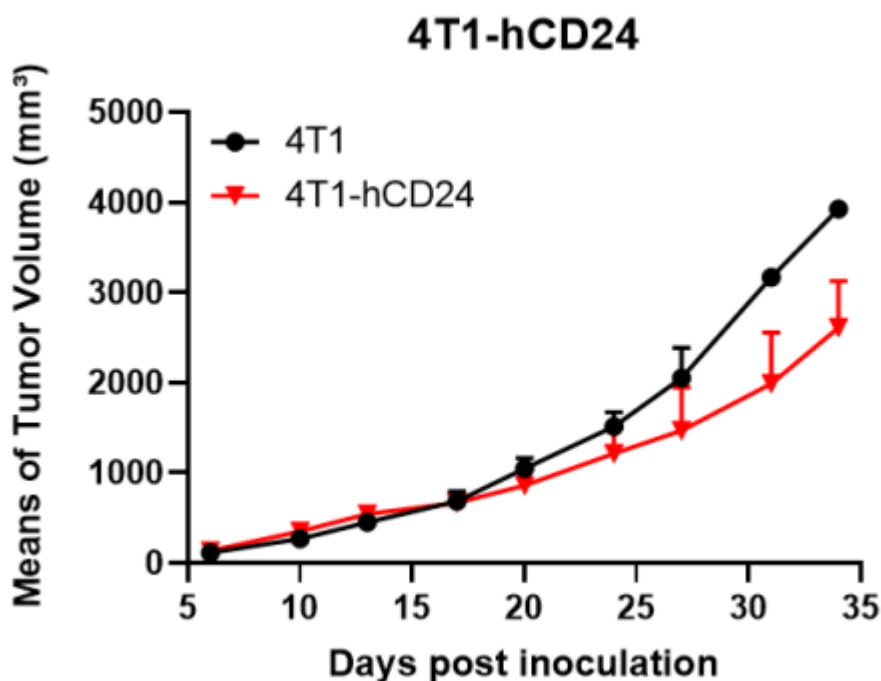


Figure 2. Tumor growth curve of 4T1-hCD24 syngeneic model (n=4)

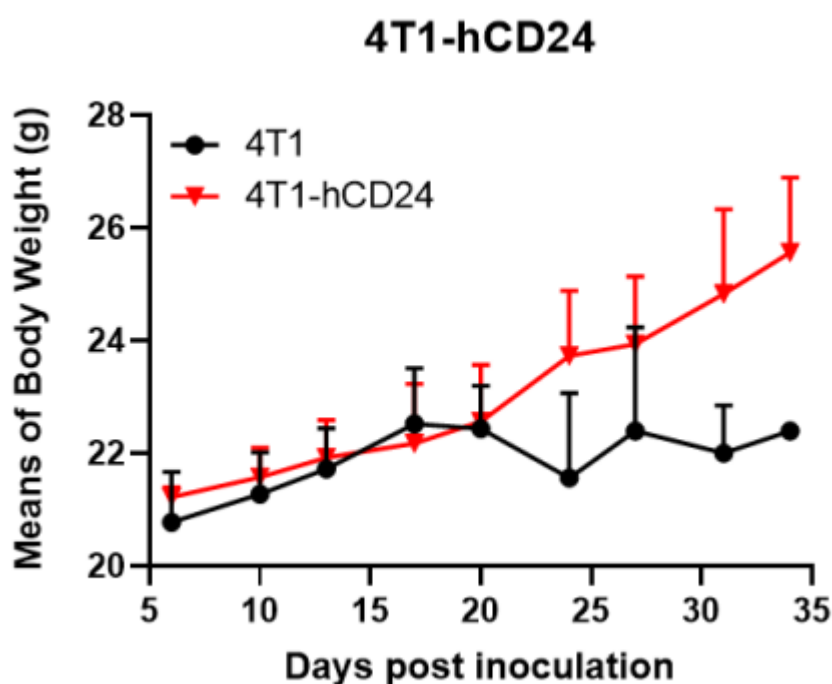


Figure 3. Body weight change of 4T1-hCD24 syngeneic model (n=4)

3. Expression of hCD24 protein in tumors

To verify the hCD24 protein expression, the tumors were dissected and separated for single cell suspension. Robust human CD24 protein expression can be detected in the humanized modified tumors.

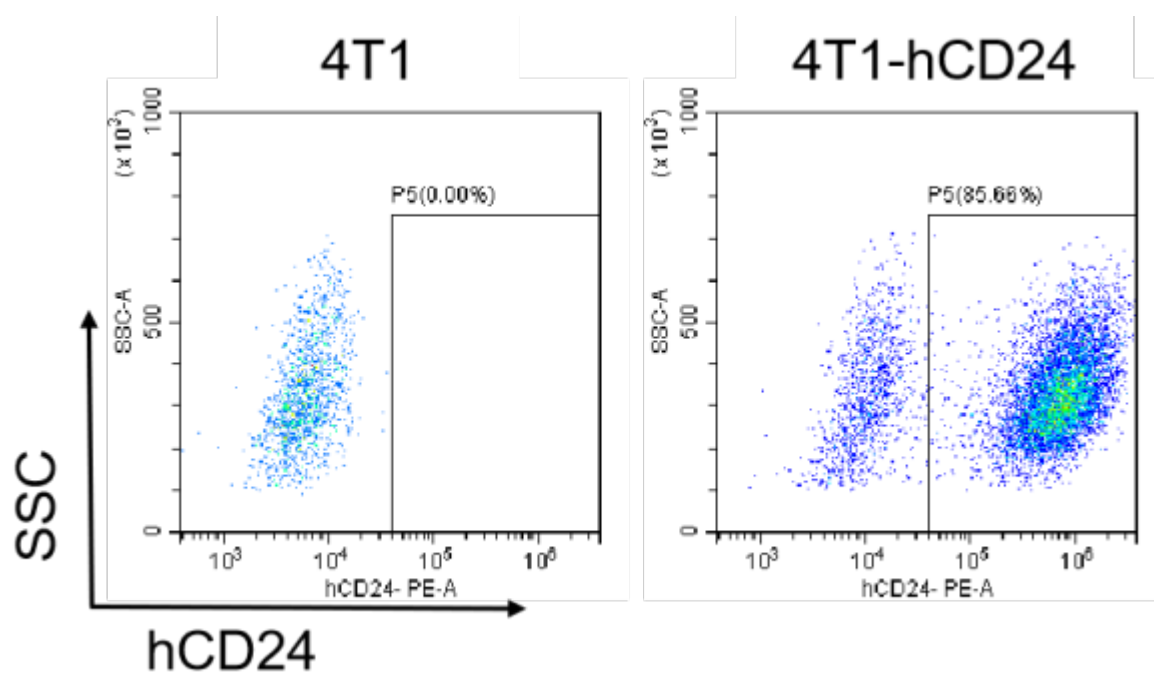


Figure 4. The expression of hCD24 in humanized modified tumors by FACS