

# MC38-hCLAUDIN 18.2/hCD47

## Strain Information

Cat. NO.	NM-S13-TM19
Cell Line	MC38- <i>Tg(hCLAUDIN 18.2)Cd47</i> <sup>tm(hCD47)Smoc</sup>
Strain State	Validation of pharmacodynamic assays completed
Model	This cell line carry humanized CLAUDIN18.2 and CD47.
Description	*Literature published using this strain should indicate: MC38-hCLAUDIN 18.2/hCD47 cell line (Cat. NO. NM-S13-TM19) was purchased from Shanghai Model Organisms Center, Inc..

## Validation Data

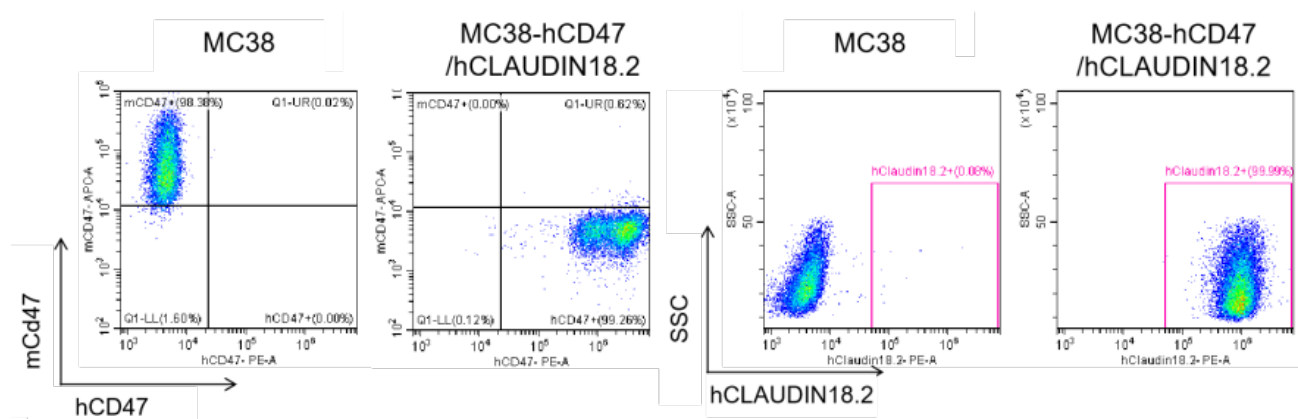


Figure 1. hCD47 and hCLAUDIN18.2 expression in MC38-hCD47/hCLAUDIN18.2 cells.

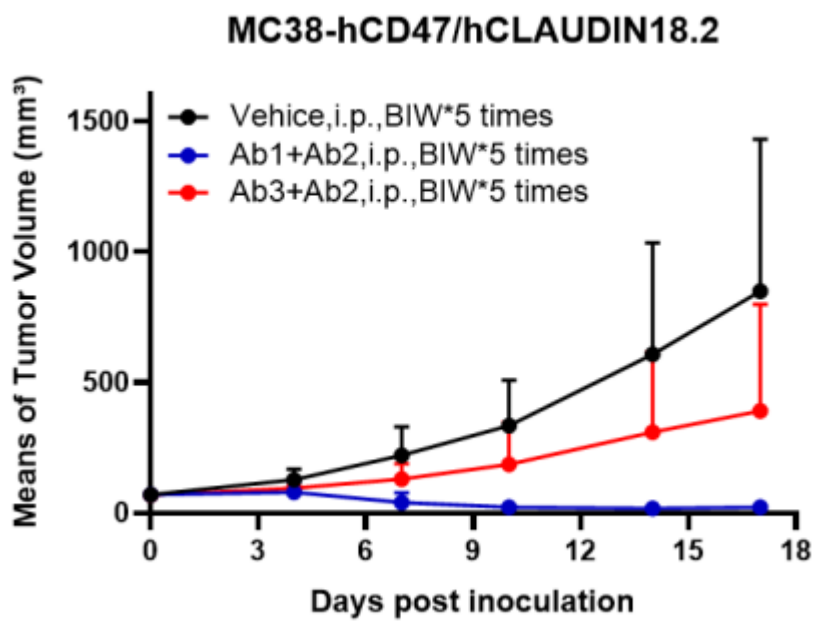


Figure 2. Antitumor activity of antibodies (n=6).