

CT26-hPD-L1

Strain Information

Cat. NO.	NM-S24A-TM01
Cell Line	CT26- <i>Cd274em1(hPDL1)/Smoc</i>
Strain State	Validation of tumorigenic capacity completed
Model Description	The endogenous mouse Cd274(also known as PD-L1) gene was replaced by human CD274 gene.
	*Literature published using this strain should indicate: CT26-hPD-L1 cell line (Cat. NO. NM-S24A-TM01) was purchased from Shanghai Model Organisms Center, Inc..

Validation Data

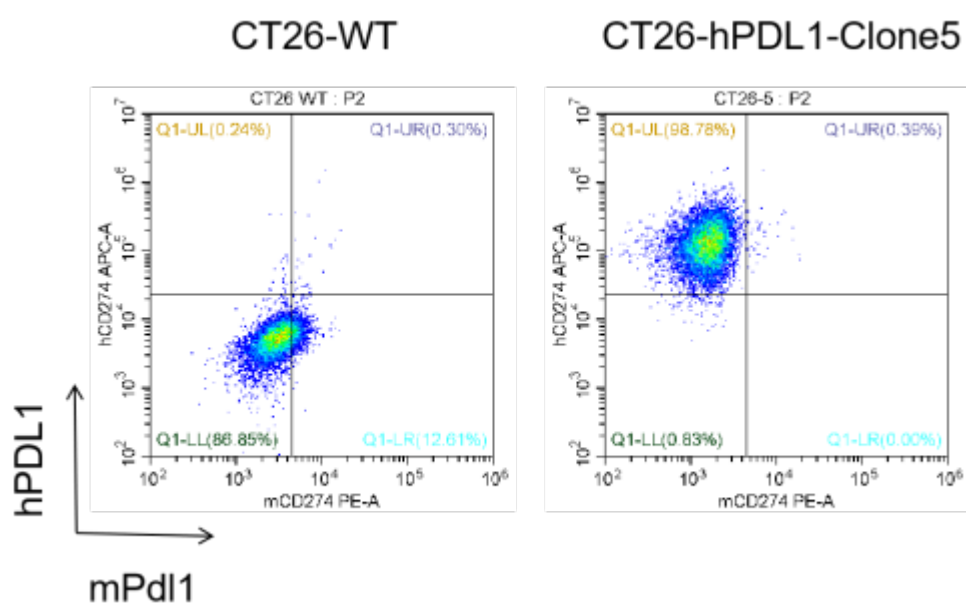


Figure 1. hPD-L1 expression in wild-type CT26 and CT26-hPD-L1 cell lines.

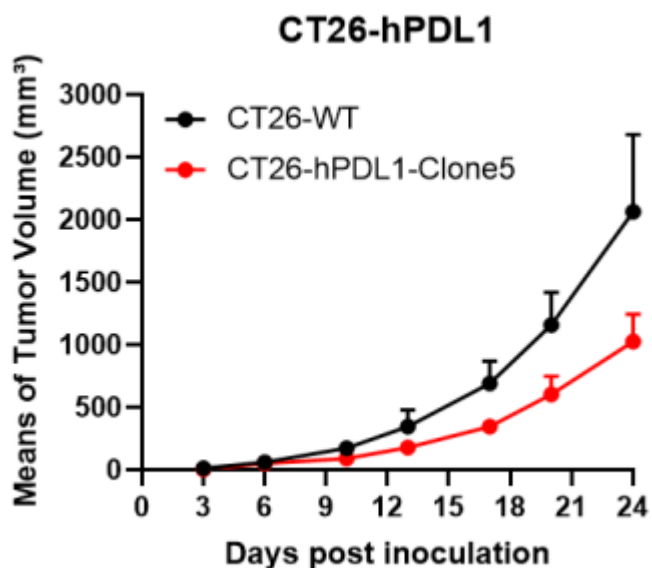


Figure 2. Tumor growth curve of CT26-hPDL1 syngeneic model (n=3).

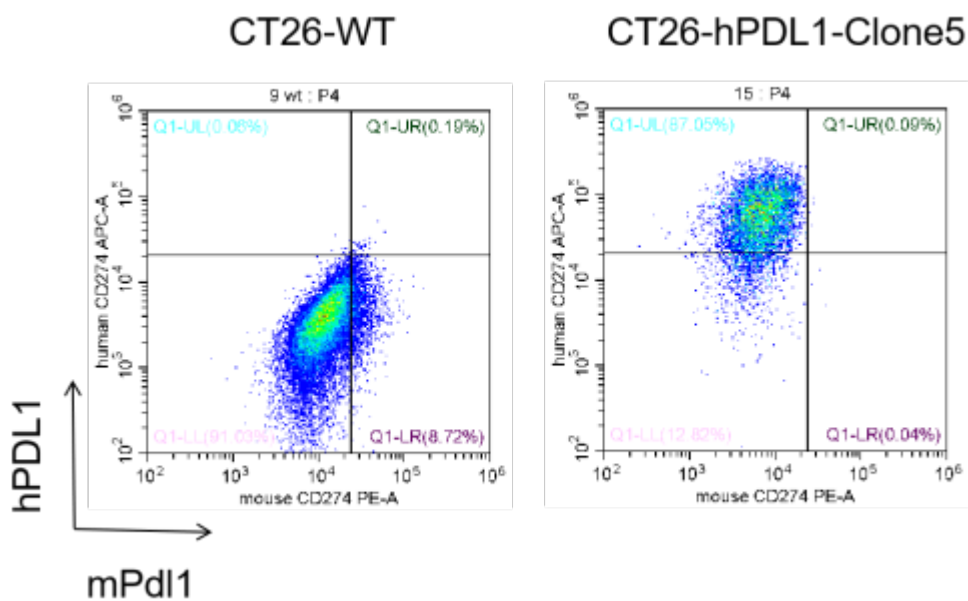


Figure 3. The expression of hPDL1 in humanized modified tumors by FACS.