

# LLC1/LL2-hPD-L1

## Strain Information

Cat. NO. NM-S30A-TM01

Cell Line LLC1/LL2-*Cd274*<sup>em1(hCD274)Smoc</sup>

Strain State Validation of tumorigenic capacity completed

Model Description The endogenous mouse Cd274(also known as PD-l1) gene was replaced by human PDL1 gene.

\*Literature published using this strain should indicate: LLC1/LL2-hPD-L1 cell line (Cat. NO. NM-S30A-TM01) was purchased from Shanghai Model Organisms Center, Inc..

## Validation Data

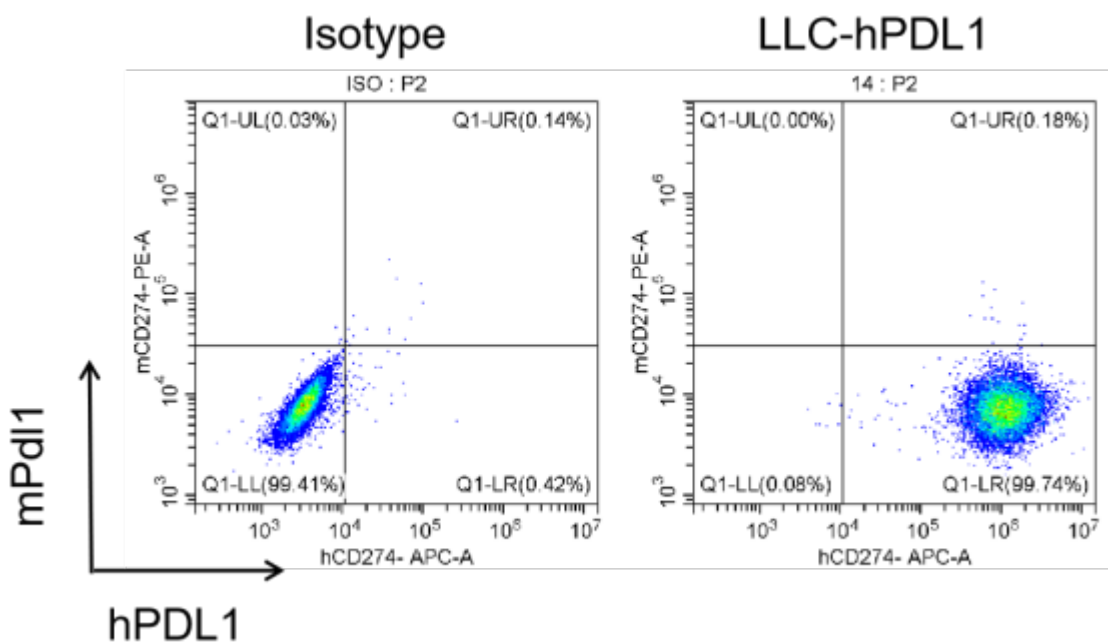


Figure 1. hPD-L1 expression in LLC1-hPD-L1 cell lines.

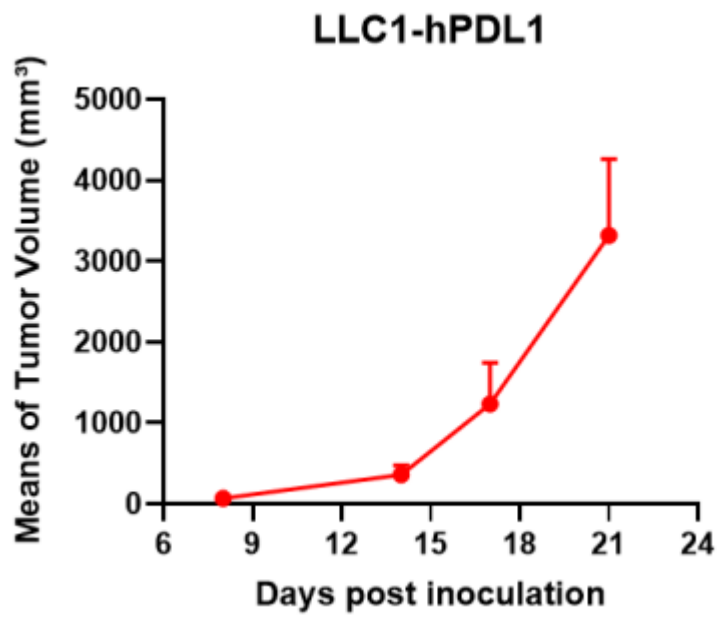


Figure 2. Tumor growth curve of LLC1-hPDL1 syngeneic model (n=3).

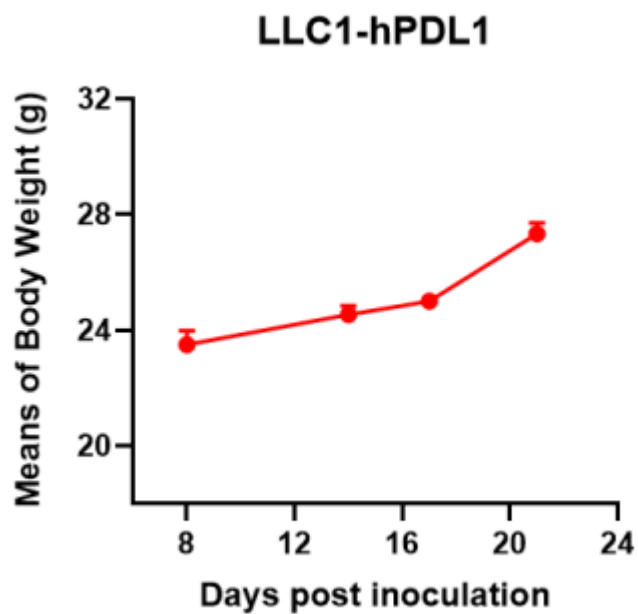


Figure 3. Body weight change of LLC1-hPDL1 syngeneic model (n=3).