

# MC38-hTROP2

## Strain Information

Cat. NO.	NM-S13-TM61
Cell Line	MC38- <i>Igs2</i> <sup>em1(hTROP2)Smoc</sup>
Strain State	Validation of tumorigenic capacity completed
Model	A Trop2 expression cassette was knocked into the H11 locus.
Description	*Literature published using this strain should indicate: MC38-hTROP2 cell line (Cat. NO. NM-S13-TM61) was purchased from Shanghai Model Organisms Center, Inc..

## Validation Data

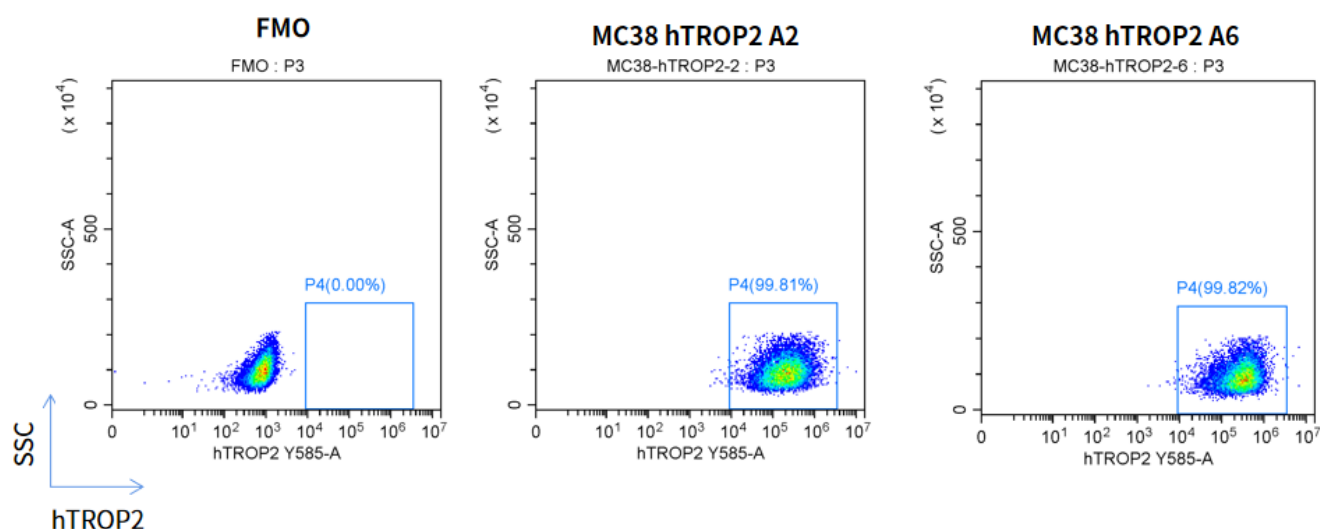


Fig1. hTROP2 expression on *in vitro* cultured cells of MC38-hTROP2.

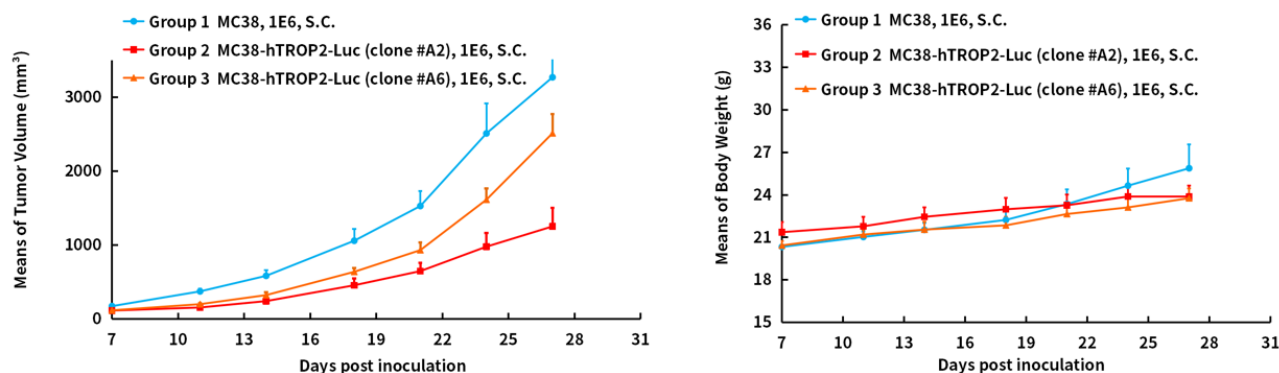


Fig2. *In vivo* validation of MC38-hTROP2 in C57BL/6 mice.

C57BL/6 mice were inoculated with MC38-hTROP2 subcutaneously at  $1 \times 10^6$  cells/mouse inoculum for tumor development.

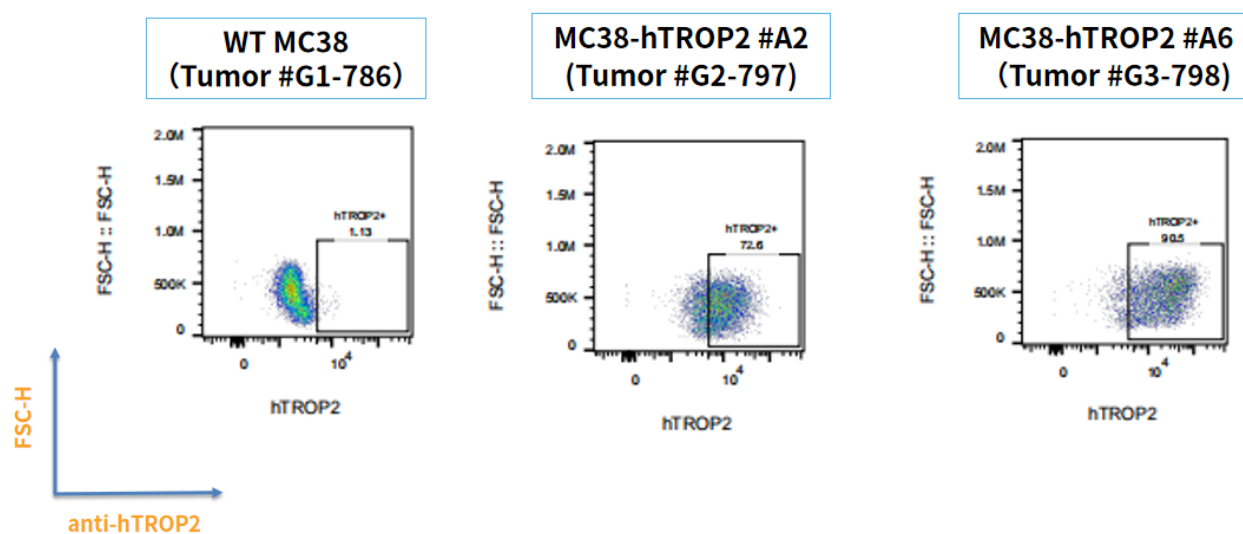


Fig3. hTROP2 expression in tumors after *in vivo* growth of MC38-hTROP2 in wild type C57BL/6 mice.

The tumors were collected at day 28 post tumor cell inoculation.