

MC38-hHER3

Strain Information

| | |
|--------------|--|
| Cat. NO. | NM-S13-TM49 |
| Cell Line | MC38- <i>Igs2</i> ^{em1(hHER3)Smoc} |
| Strain State | Validation of tumorigenic capacity completed |
| Model | A HER3 expression cassette was knocked into the H11 locus. |
| Description | *Literature published using this strain should indicate: MC38-hHER3 cell line (Cat. NO. NM-S13-TM49) was purchased from Shanghai Model Organisms Center, Inc.. |

Validation Data

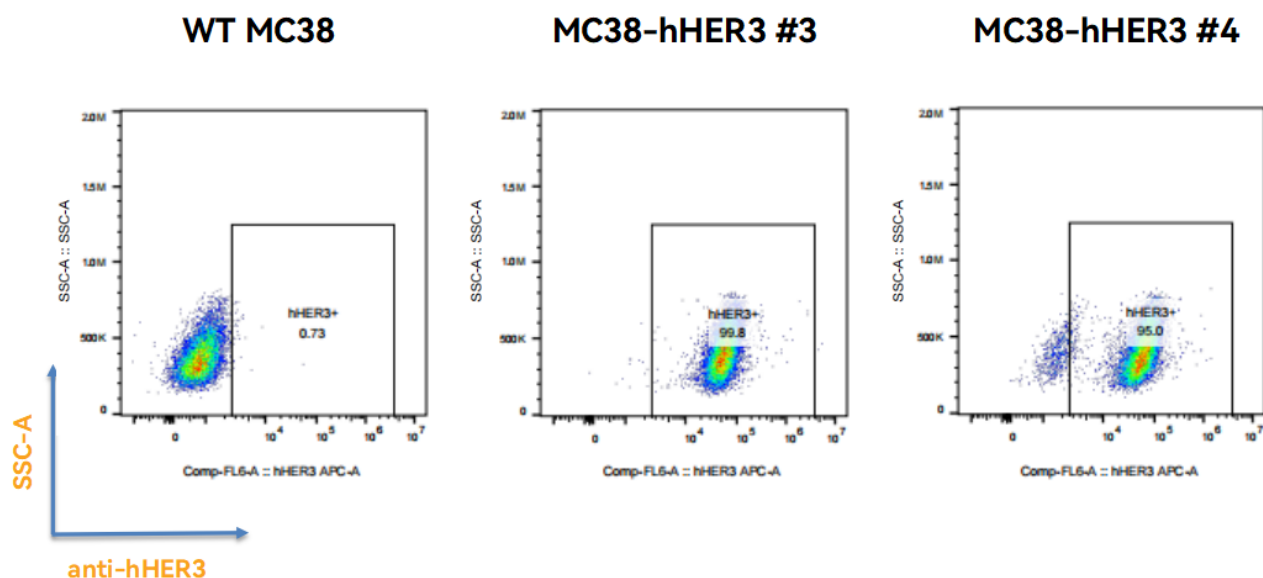


Fig1. hHER3 expression on *in vitro* cultured cells of MC38-hHER3.

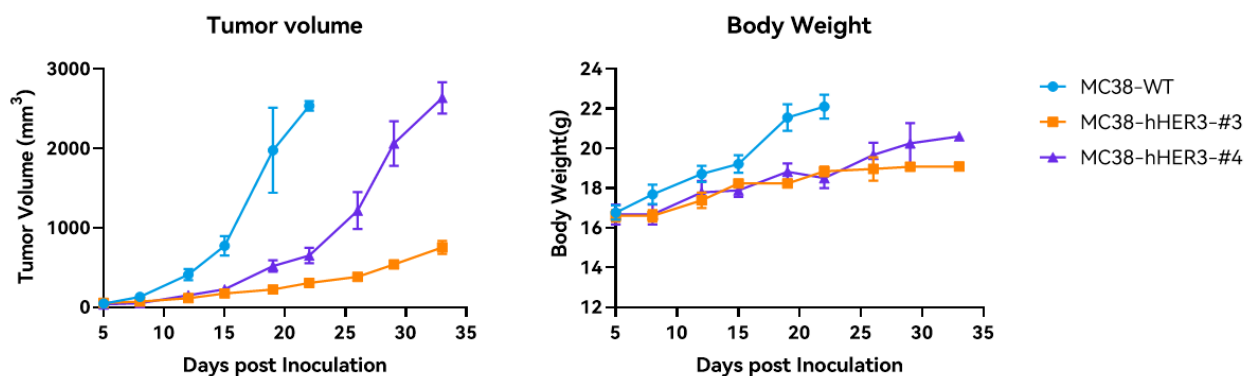


Fig2. *In vivo* validation of MC38-hHER3 in C57BL/6 mice.

C57BL/6 mice were inoculated with MC38-hHER3 subcutaneously at 1×10^6 cells/mouse inoculum for tumor development.

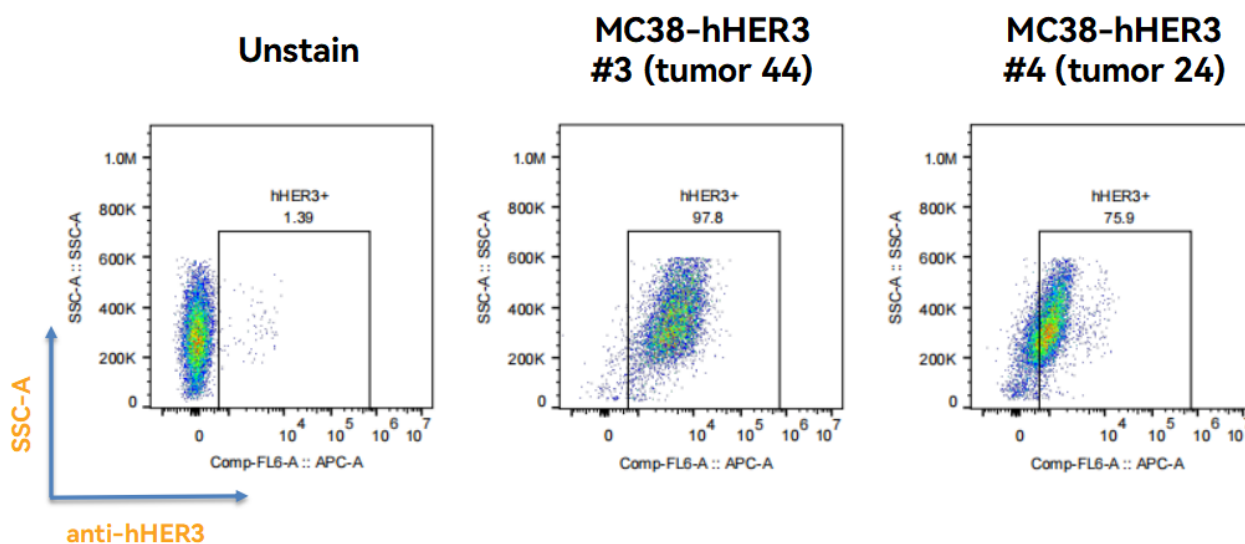


Fig3. hHER3 expression in tumors after *in vivo* growth of MC38-hHER3 in wild type C57BL/6 mice.

The tumors were collected at day 33 post tumor cell inoculation.