

MC38-hCDH17

Strain Information

Cat. NO.	NM-S13-TM22
Cell Line	MC38- <i>Igs2</i> ^{em1(hCDH17)} Smoc
Strain State	Validation of tumorigenic capacity completed
Model	A CDH17 expression cassette was knocked into the H11 locus.
Description	*Literature published using this strain should indicate: MC38-hCDH17 cell line (Cat. NO. NM-S13-TM22) was purchased from Shanghai Model Organisms Center, Inc..

Validation Data

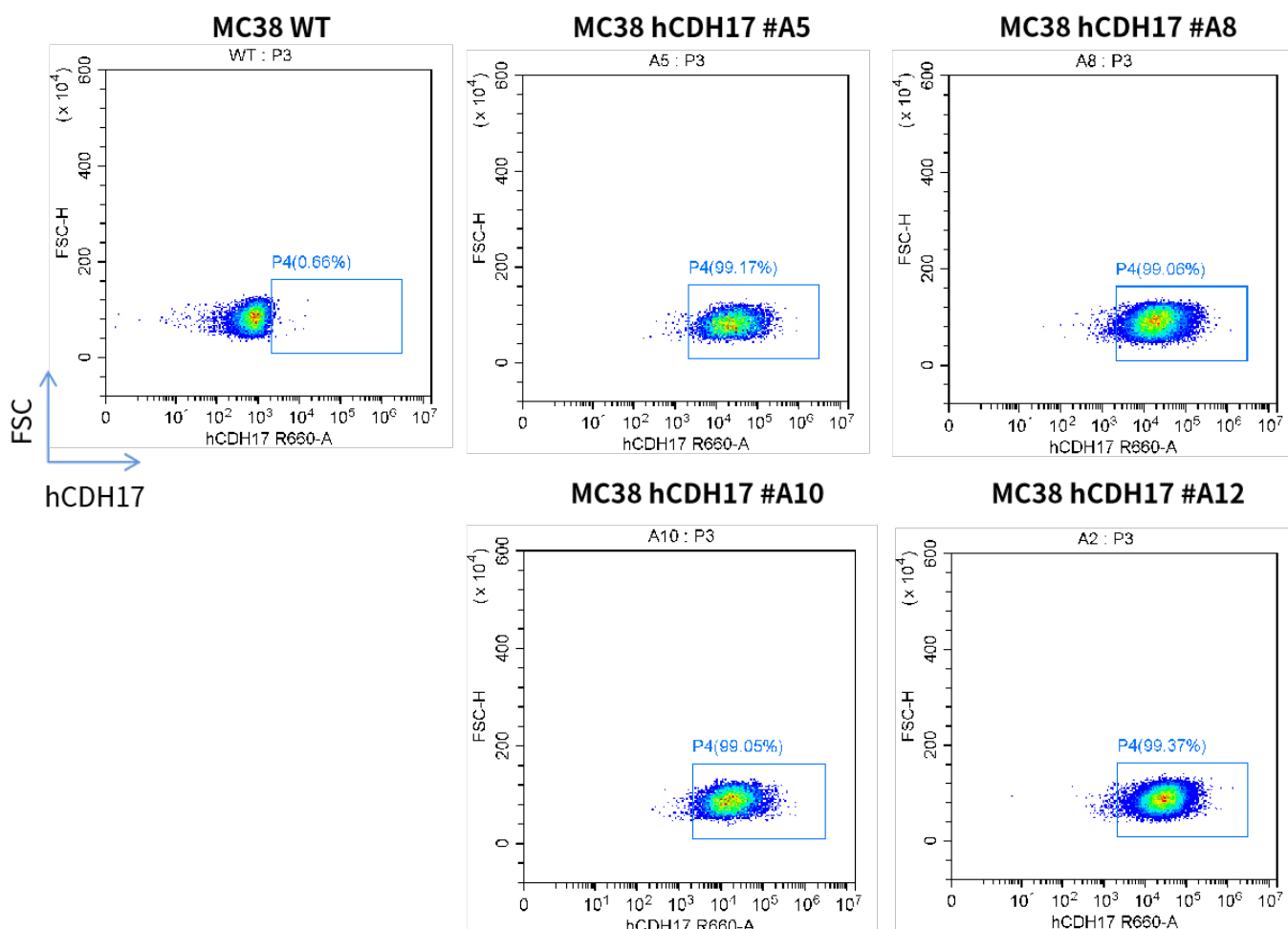


Fig1.CDH17 expression on in vitro cultured cells of MC38-hCDH17 cell line

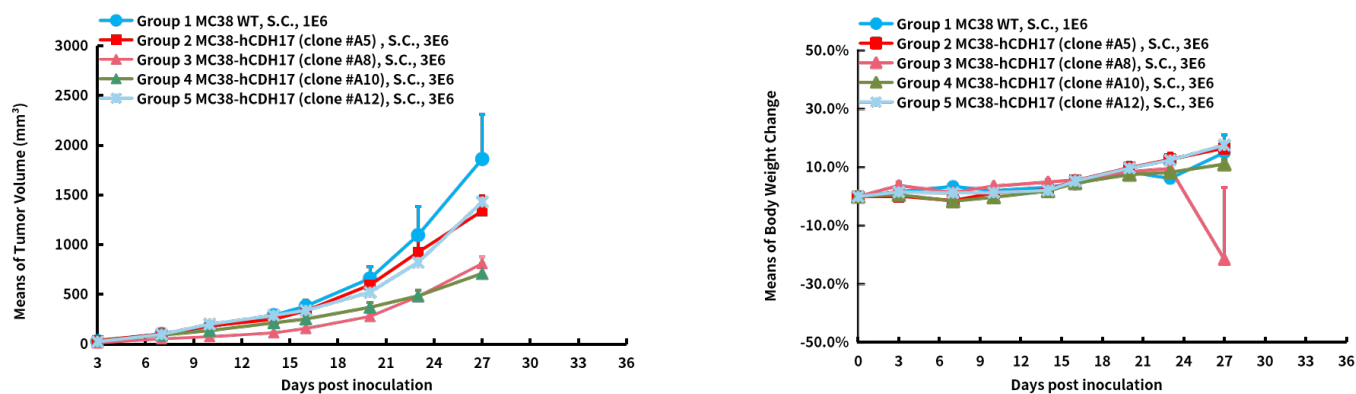


Fig2. In vivo validation of MC38-hCDH17 in C57BL/6 mice

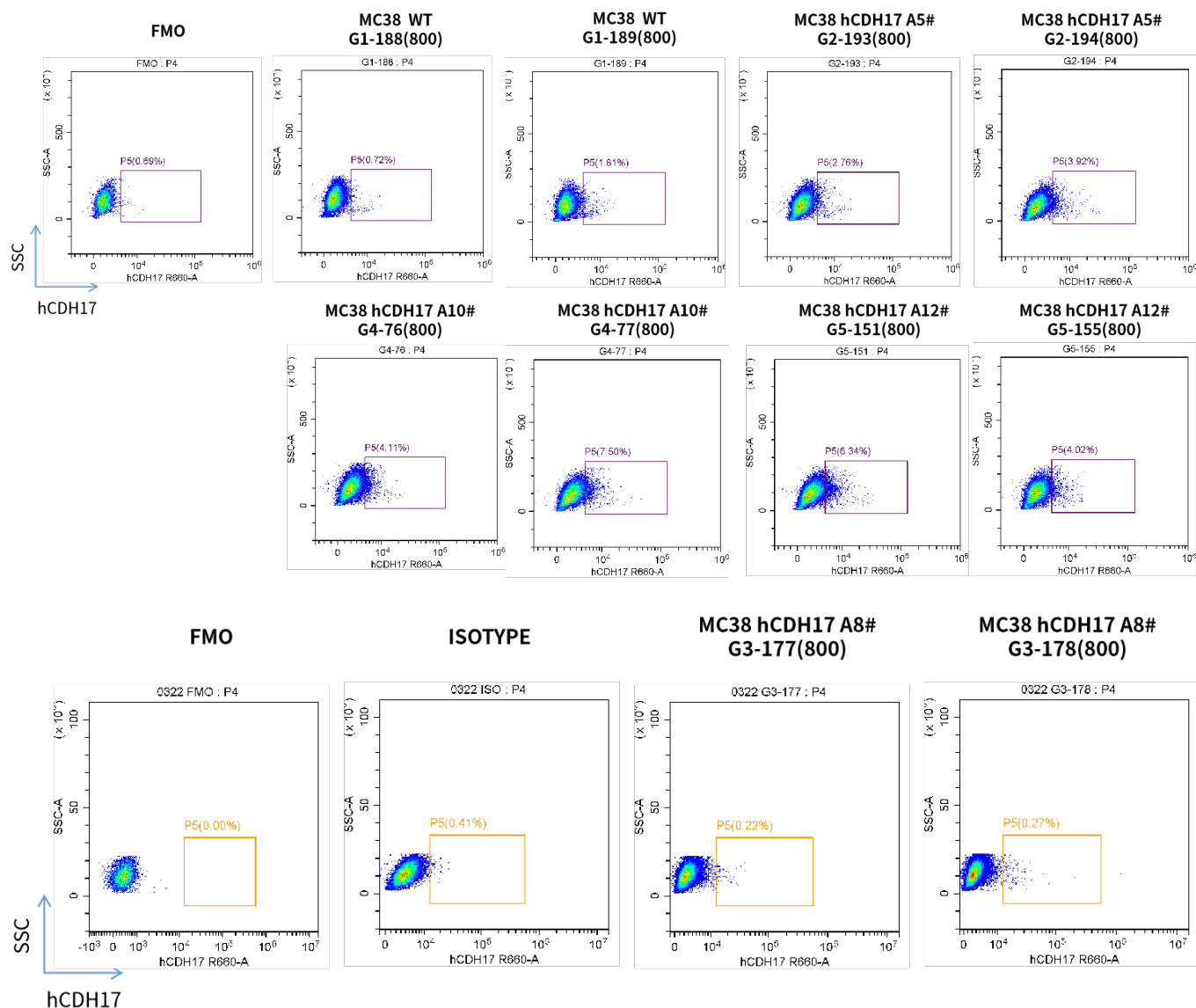


Fig3. CDH17 expression in tumors after in vivo growth of MC38-hCDH17 in wild type C57BL/6 mice