

MC38-hCD24/hPD-L1

Strain Information

Cat. NO.	NMC-230052
Cell Line	MC38-hCD24/hPD-L1
Strain State	Validation of tumorigenic capacity completed
Model	CD24/PD-L1 gene humanized MC38 cell line
Description	*Literature published using this strain should indicate: MC38-hCD24/hPD-L1 cell line (Cat. NO. NMC-230052) was purchased from Shanghai Model Organisms Center, Inc..

Validation Data

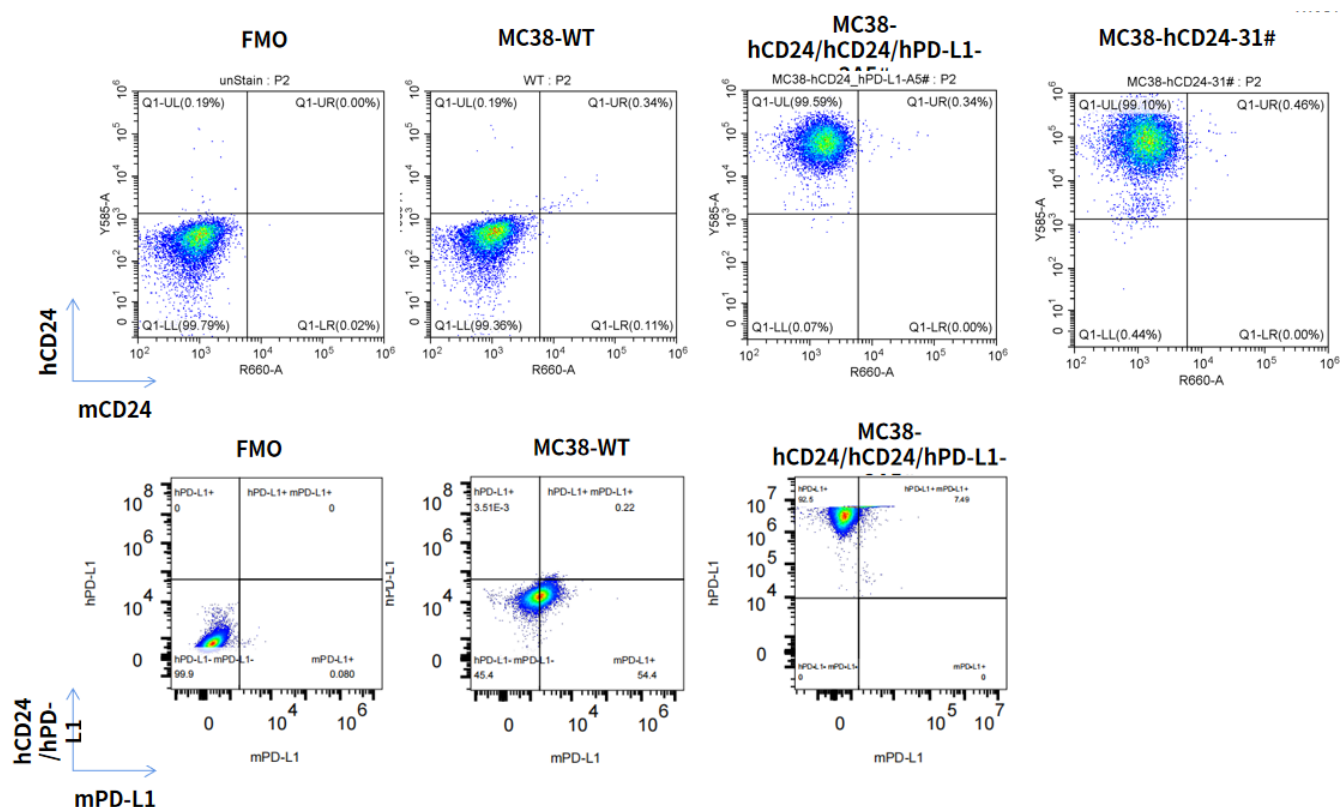


Fig1.human/mouse CD24/PD-L1 expression in vitro cultured cells of MC38-hCD24/hPD-L1

- C57BL/6 mice were inoculated with MC38-hCD24/hPD-L1 subcutaneously at 3×10^6 cells/mouse inoculum for tumor development.

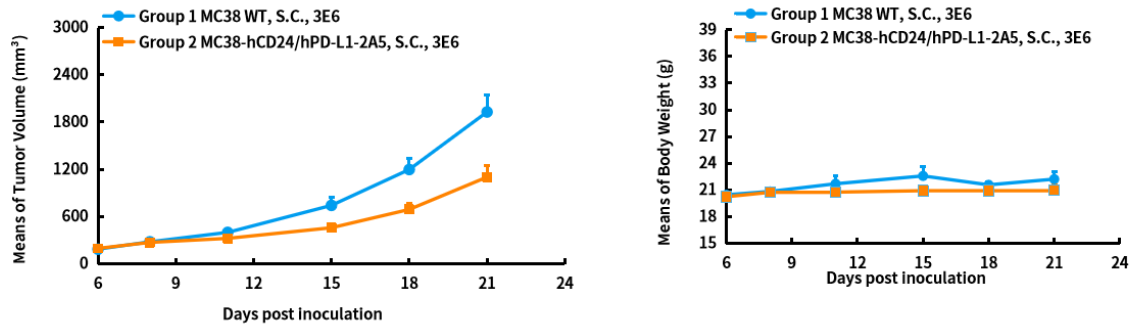


Fig2. In vivo validation of MC38-hCD24/hPD-L1 in C57BL/6 mice

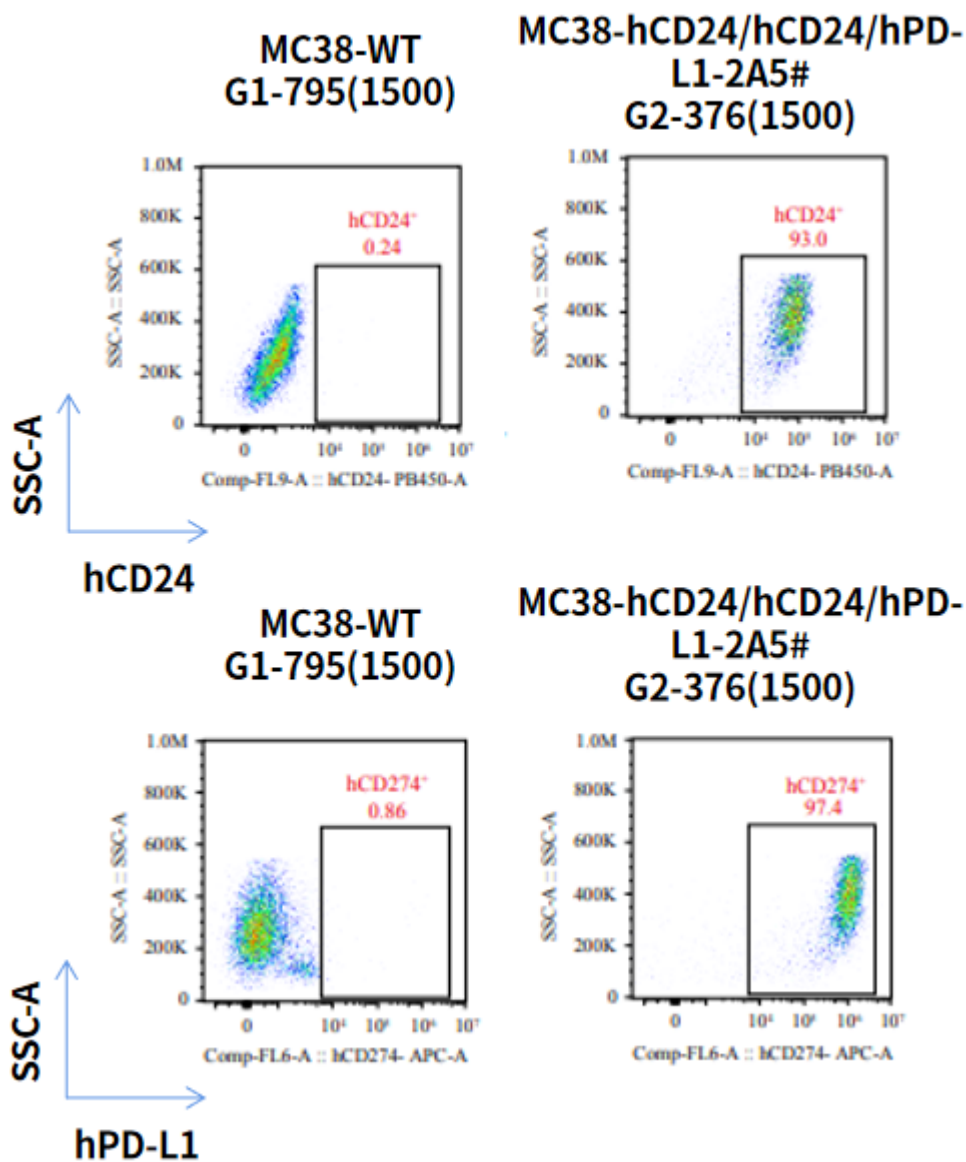


Fig3. hPD-L1 expression in tumors after in vivo growth of H22-hPD-L1 in wild type hPD-L1(BALB/c) mouse

