



CT26-hEpCAM-Luc

Strain Information

Cat. NO.	NMC-230035
Cell Line	CT26- <i>EpCAM</i> ^{em1(hEpCAM-Luc)Smoc}
Strain State	Validation of tumorigenic capacity completed
Model	EPCAM gene humanized CT26 cell line
Description	*Literature published using this strain should indicate: CT26-hEpCAM-Luc cell line (Cat. NO. NMC-230035) was purchased from Shanghai Model Organisms Center, Inc..

Validation Data

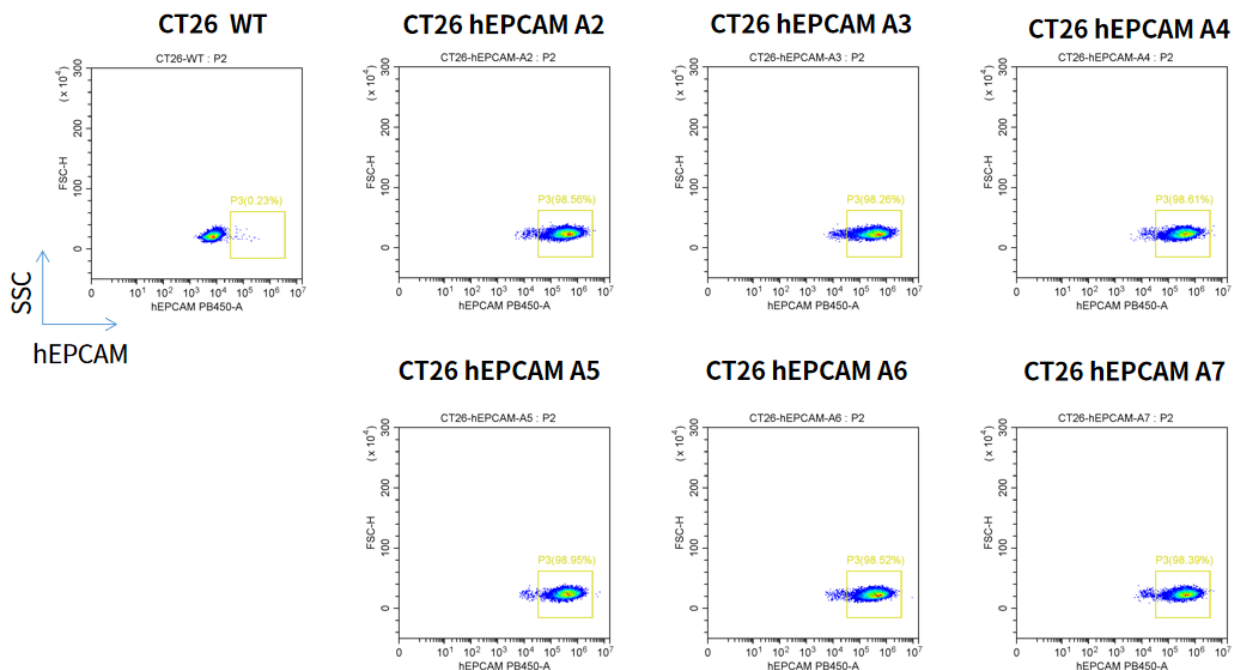


Fig1.hEPCAM expression on in vitro cultured cells of CT26-hEPCAM

- BALB/c mice were inoculated with CT26-hEPCAM subcutaneously at 1.5×10^7 cells/mouse inoculum for tumor development.

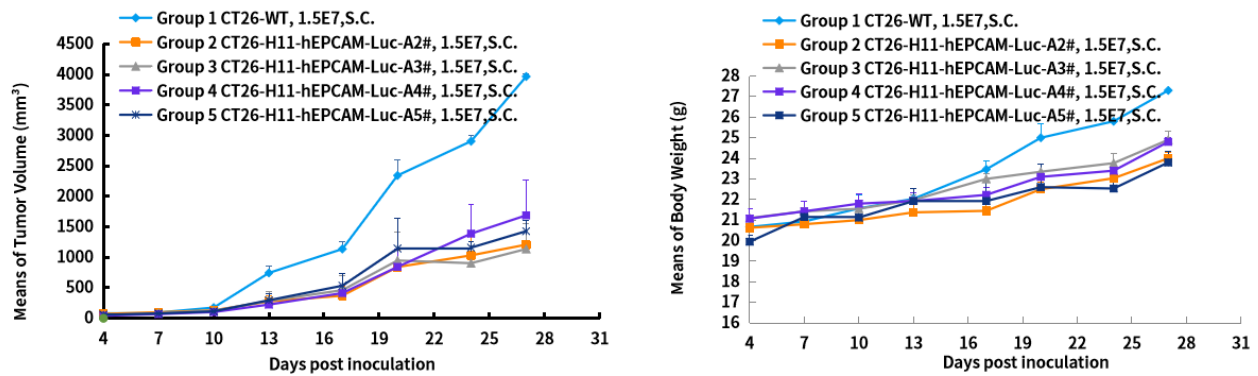


Fig2. In vivo validation of CT26-hEPCAM in BALB/c mice

- The tumors were collected at day 32 post tumor cell inoculation.

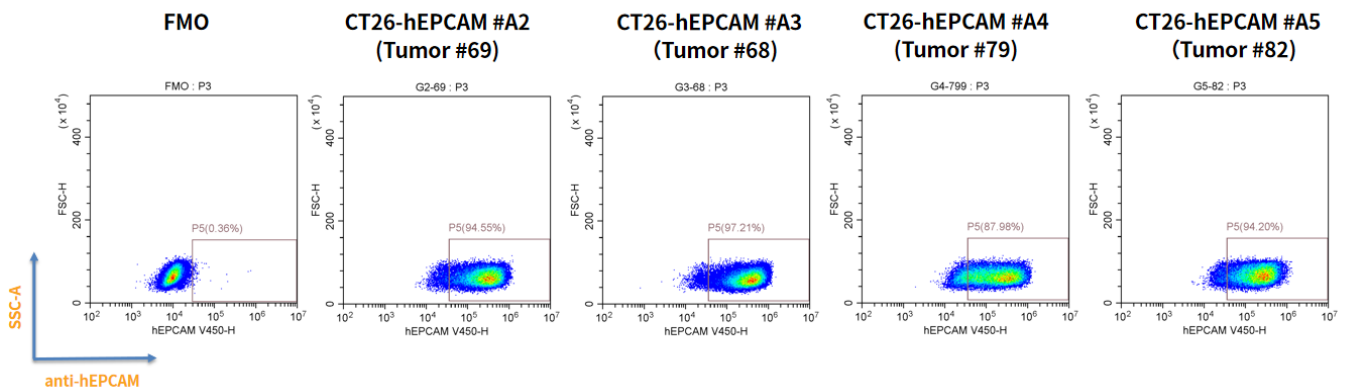


Fig3. hEPCAM expression in tumors after in vivo growth of CT26-hEPCAM in wild type BALB/c mice