

A20-H11-hCD20-Luc

Strain Information

Cat. NO.	NMC-230031
Cell Line	A20- <i>Igs2</i> ^{em1(hCD20-Luc)Smoc}
Strain State	Validation of tumorigenic capacity completed
Model	CD20 gene humanized A20 B cell line
Description	*Literature published using this strain should indicate: A20-H11-hCD20-Luc cell line (Cat. NO. NMC-230031) was purchased from Shanghai Model Organisms Center, Inc..

Validation Data

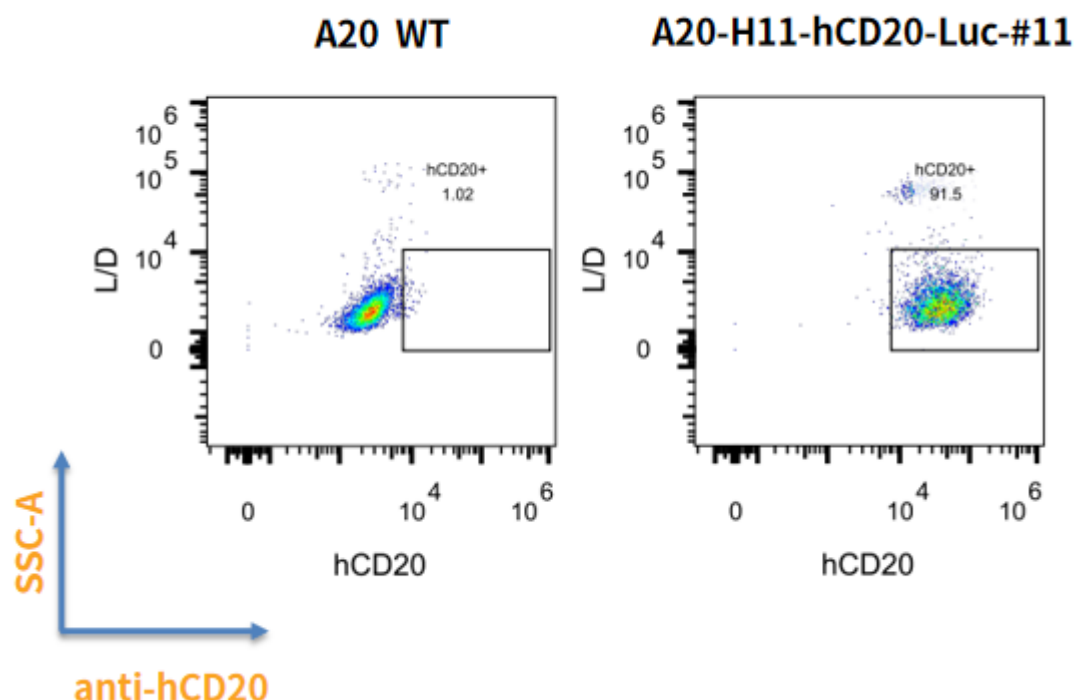


Fig1.hCD20 expression on in vitro cultured cells of A20-H11-hCD20-Luc

- BALB/c mice were inoculated with A20-H11-hCD20-Luc subcutaneously at 2.5×10^6 cells/mouse inoculum for tumor development.

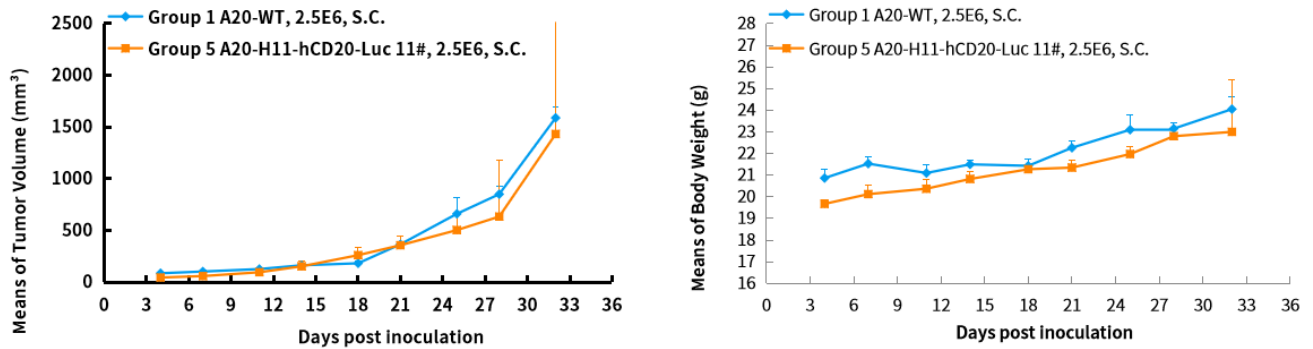


Fig2. In vivo validation of A20-H11-hCD20-Luc in BALB/c mice

- The tumors were collected at day 27 post tumor cell inoculation.

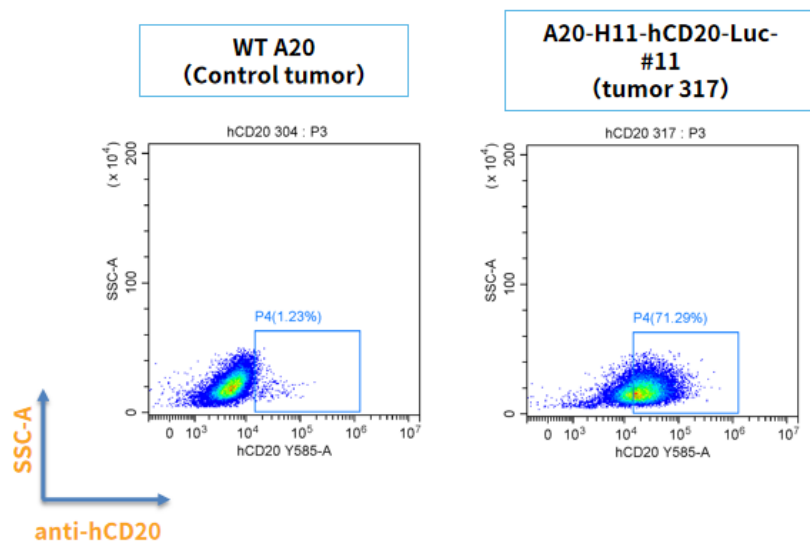


Fig3. hCD20 expression in tumors after in vivo growth of A20-H11-hCD20-Luc in wild type BALB/c mice