

MC38-hDDR1

Strain Information

Cat. NO.	NMC-230013
Cell Line	MC38- <i>Ddr1</i> ^{em1(hDDR1)Smoc}
Strain State	Validation of tumorigenic capacity completed
Model	DDR1 gene humanized MC38 cell line
Description	*Literature published using this strain should indicate: MC38-hDDR1 cell line (Cat. NO. NMC-230013) was purchased from Shanghai Model Organisms Center, Inc..

Validation Data

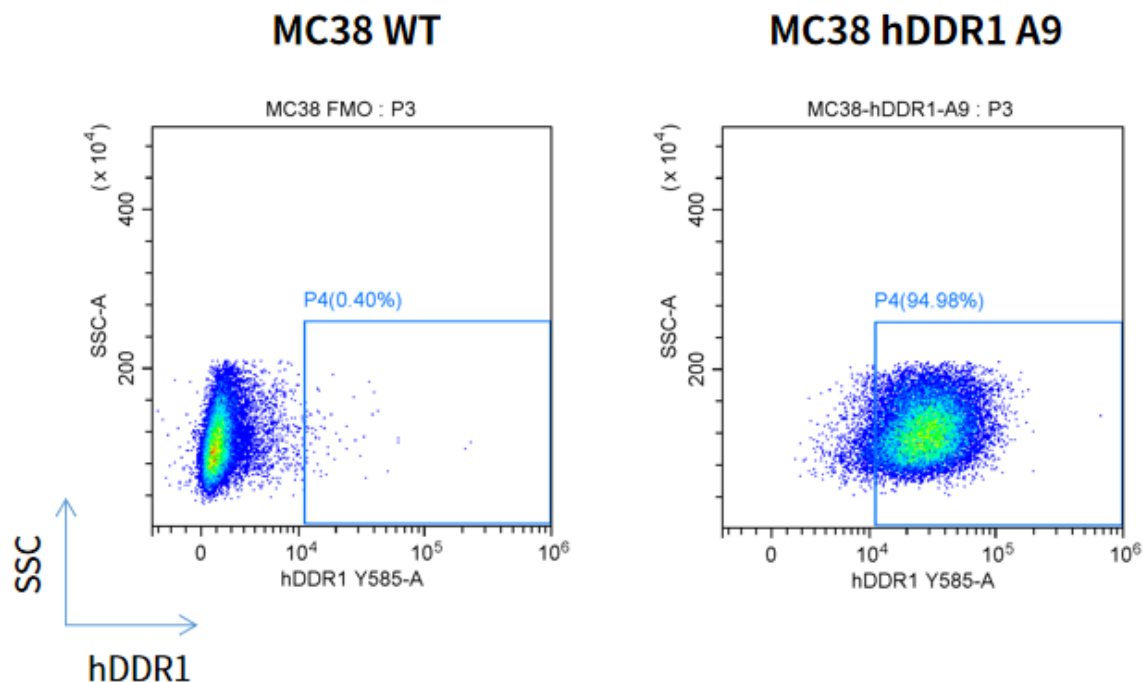


Fig1.hDDR1 expression on in vitro cultured cells of MC38-hDDR1

- C57BL/6 mice were inoculated with MC38-hDDR1 subcutaneously at 1×10^6 or 3×10^6 cells/mouse inoculum for tumor development.

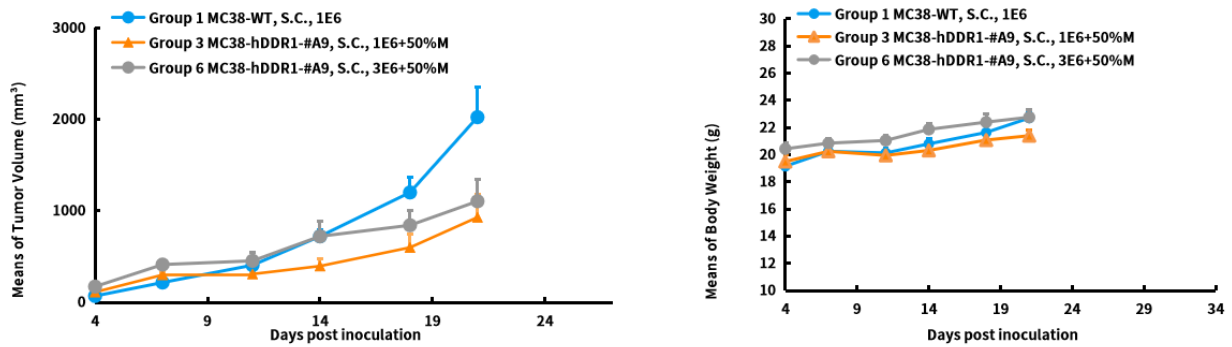
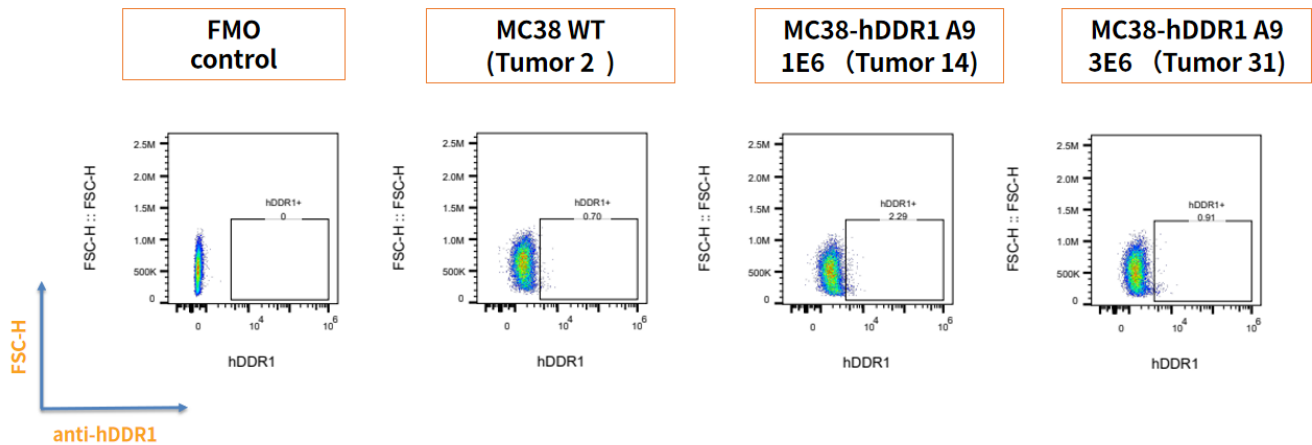


Fig2. In vivo validation of MC38-hDDR1 in C57BL/6 mouse



注：瘤内细胞不表达，不建议用于体内成瘤实验

Fig3. hDDR1 expression in tumors after in vivo growth of MC38-hDDR1 in wild type C57BL/6 mice