

# CT26-hPSMA (2)

## Strain Information

Cat. NO.	NM-S24A-TM41
Cell Line	CT26-Tg(hPSMA)Smoc
Strain State	Validation of target gene expression completed
Model	PSMA gene humanized CT26 cell line
Description	*Literature published using this strain should indicate: CT26-hPSMA (2) cell line (Cat. NO. NM-S24A-TM41) was purchased from Shanghai Model Organisms Center, Inc..

## Validation Data

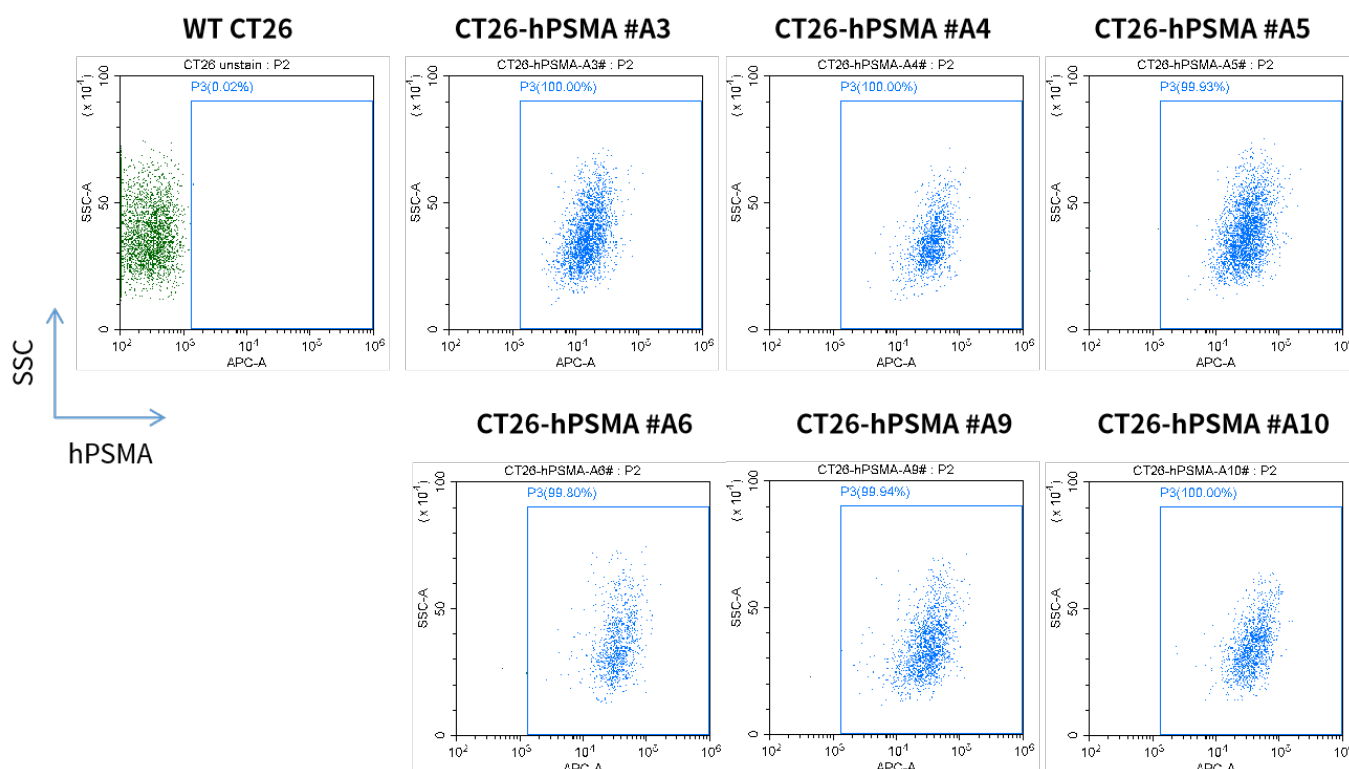


Fig1. hPSMA expression in vitro cultured cells of CT26-hPSMA